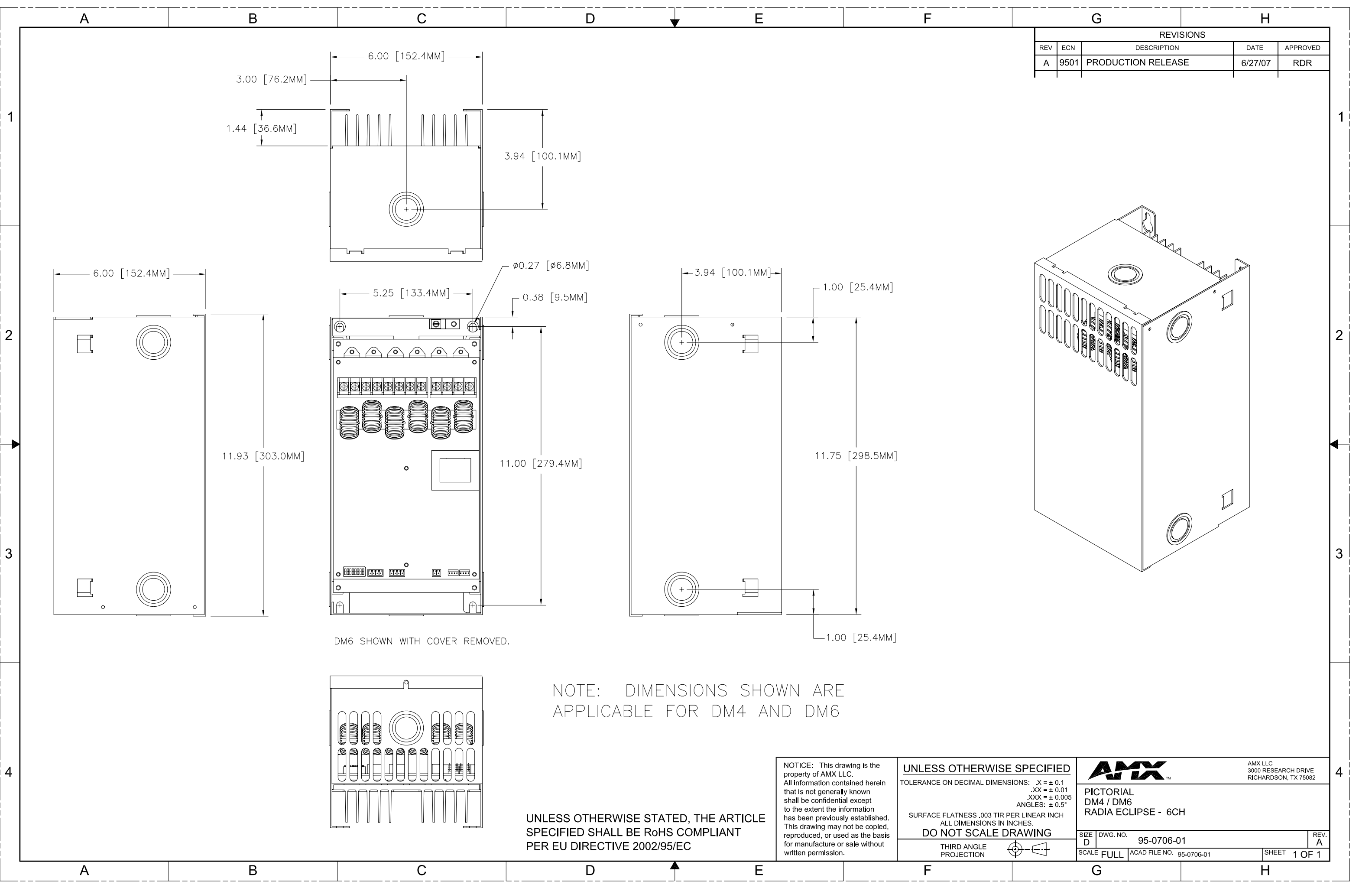


REVISIONS				
REV	ECN	DESCRIPTION	DATE	APPROVED
A	9501	PRODUCTION RELEASE	6/27/07	RDR



DM6 SHOWN WITH COVER REMOVED.

NOTE: DIMENSIONS SHOWN ARE APPLICABLE FOR DM4 AND DM6

UNLESS OTHERWISE STATED, THE ARTICLE SPECIFIED SHALL BE RoHS COMPLIANT PER EU DIRECTIVE 2002/95/EC

NOTICE: This drawing is the property of AMX LLC. All information contained herein that is not generally known shall be confidential except to the extent the information has been previously established. This drawing may not be copied, reproduced, or used as the basis for manufacture or sale without written permission.

UNLESS OTHERWISE SPECIFIED
 TOLERANCE ON DECIMAL DIMENSIONS: .X = ± 0.1
 .XX = ± 0.01
 .XXX = ± 0.005
 ANGLES: ± 0.5°
 SURFACE FLATNESS .003 TIR PER LINEAR INCH
 ALL DIMENSIONS IN INCHES.
DO NOT SCALE DRAWING
 THIRD ANGLE PROJECTION

AMX		AMX LLC 3000 RESEARCH DRIVE RICHARDSON, TX 75082
PICTORIAL DM4 / DM6 RADIA ECLIPSE - 6CH		
SIZE D	DWG. NO. 95-0706-01	REV. A
SCALE FULL	ACAD FILE NO. 95-0706-01	SHEET 1 OF 1