

A

B

C

D

E

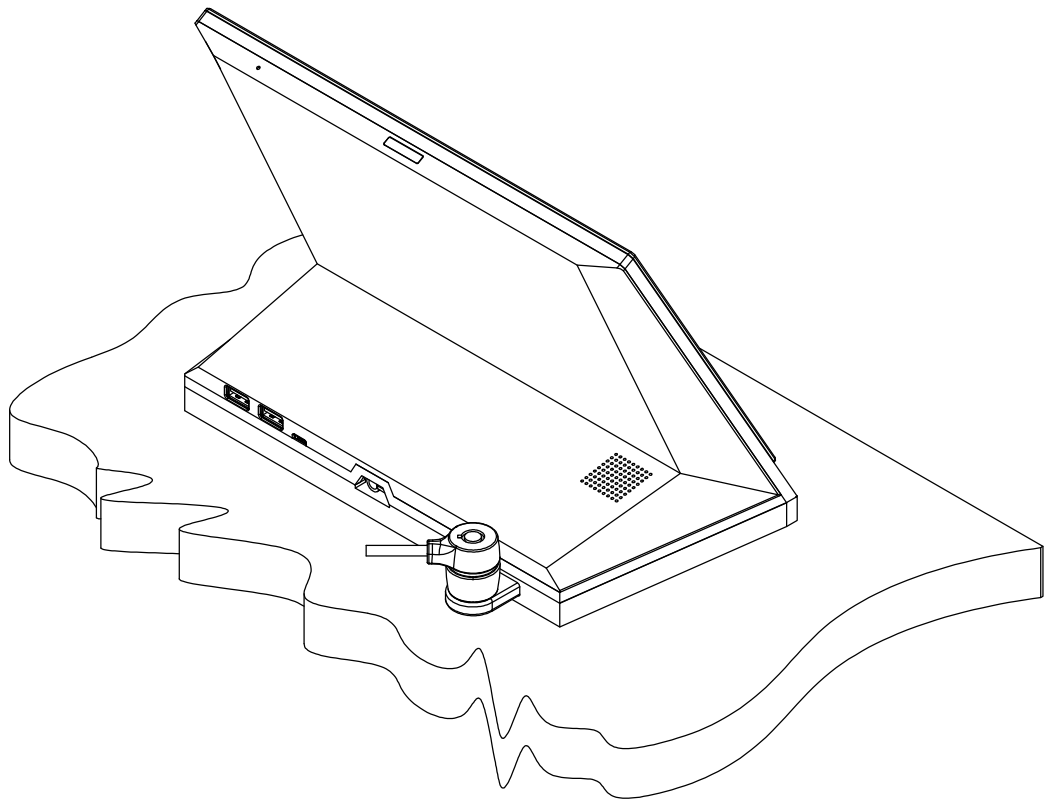
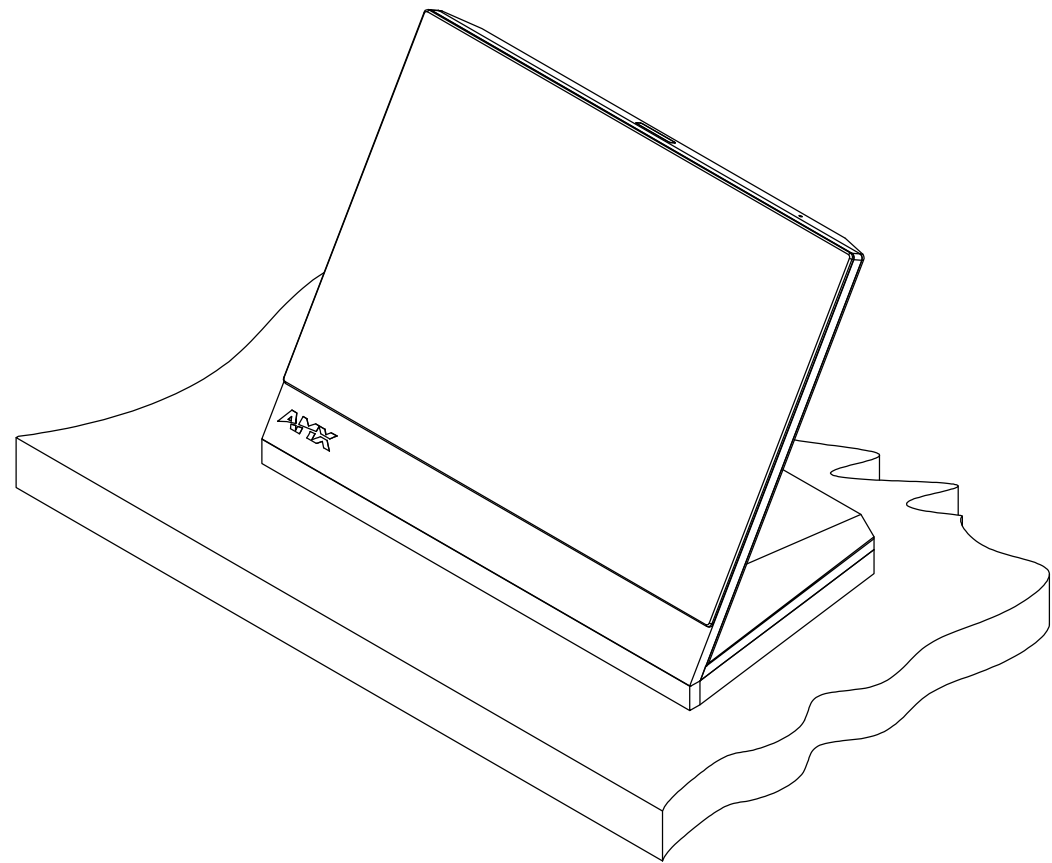
F

G

H

REVISIONS

REV	ECN	DESCRIPTION	DATE	APPROVED
A	21552	RELEASE TO PRODUCTION	10/18/13	J.L.



KENSINGTON LOCK OPTION

NOTICE: This drawing is the property of AMX LLC. All information contained herein that is not generally known shall be confidential except to the extent the information has been previously established. This drawing may not be copied, reproduced, or used as the basis for manufacture or sale without written permission.

UNLESS OTHERWISE SPECIFIED

TOLERANCE ON DECIMAL DIMENSIONS: .X = ± 0.1
.XX = ± 0.01
.XXX = ± 0.005
ANGLES: ± 0.5°

SURFACE FLATNESS .003 TIR PER LINEAR INCH
ALL DIMENSIONS IN INCHES.

DO NOT SCALE DRAWING

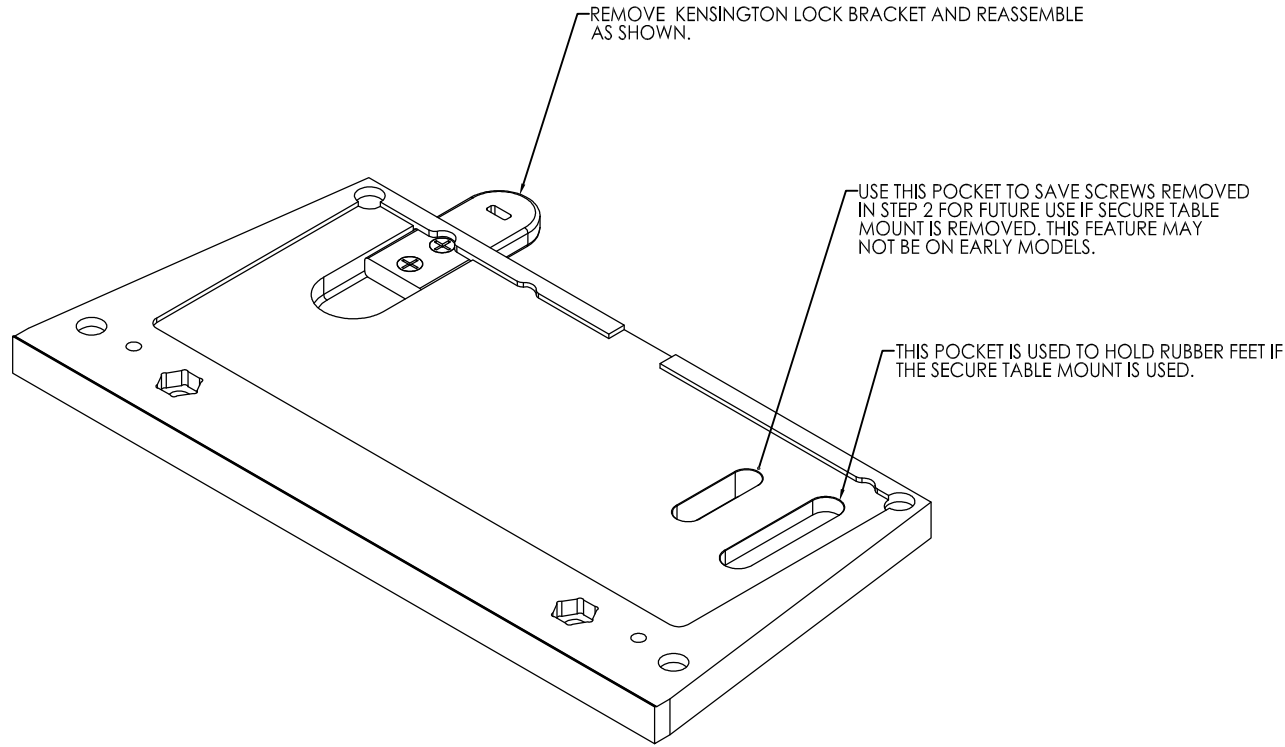
THIRD ANGLE
PROJECTION



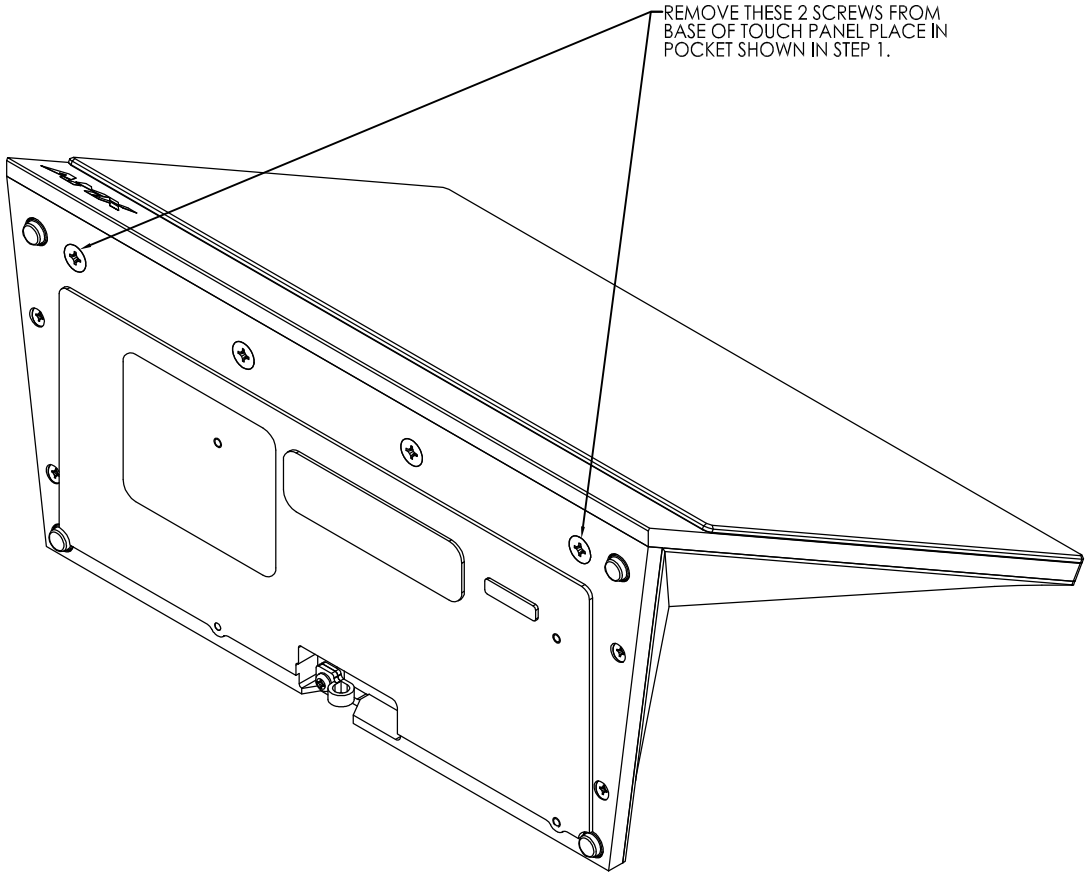
AMX LLC
3000 RESEARCH DRIVE
RICHARDSON, TX 75082

SPECIFICATION, , MXA-STMK-10,
SECURE TABLE MOUNT KIT, MODERO X

SIZE D	DWG. NO. SP5968-66	REV. A
SCALE 1/1	ACAD FILE NO.	SHEET 1 OF 10




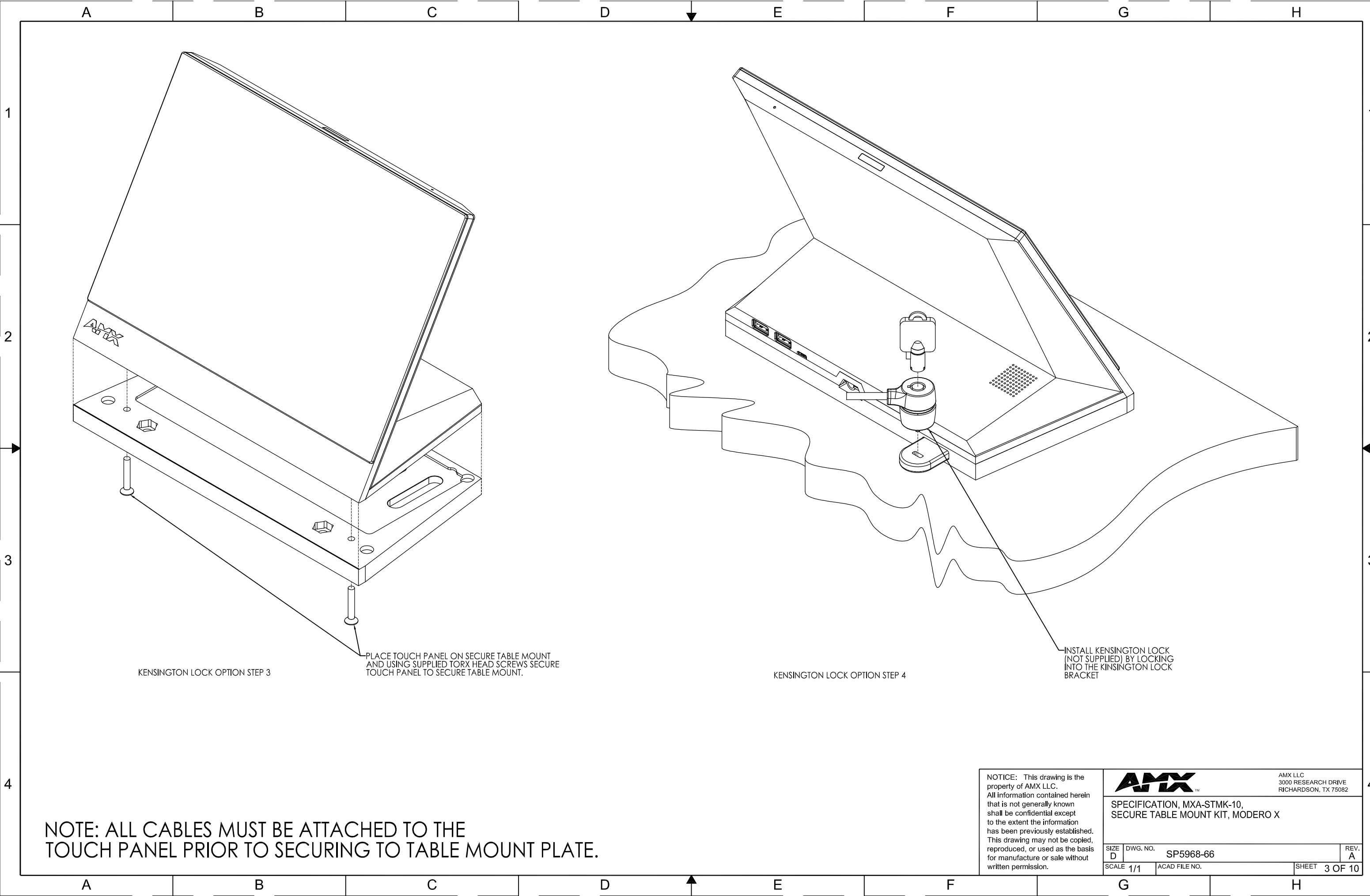
KENSINGTON LOCK OPTION STEP 1



KENSINGTON LOCK OPTION STEP 2

KENSINGTON LOCK OPTION

NOTICE: This drawing is the property of AMX LLC. All information contained herein that is not generally known shall be confidential except to the extent the information has been previously established. This drawing may not be copied, reproduced, or used as the basis for manufacture or sale without written permission.			 <div>AMX LLC 3000 RESEARCH DRIVE RICHARDSON, TX 75082</div>	
			SPECIFICATION, MXA-STMK-10, SECURE TABLE MOUNT KIT, MODERO X	
SIZE D	DWG. NO. SP5968-66			REV. A
SCALE 1/1		ACAD FILE NO.		SHEET 2 OF 10



KENSINGTON LOCK OPTION STEP 3

PLACE TOUCH PANEL ON SECURE TABLE MOUNT
AND USING SUPPLIED TORX HEAD SCREWS SECURE
TOUCH PANEL TO SECURE TABLE MOUNT.

KENSINGTON LOCK OPTION STEP 4

INSTALL KENSINGTON LOCK
(NOT SUPPLIED) BY LOCKING
INTO THE KINSINGTON LOCK
BRACKET

NOTE: ALL CABLES MUST BE ATTACHED TO THE
TOUCH PANEL PRIOR TO SECURING TO TABLE MOUNT PLATE.

NOTICE: This drawing is the property of AMX LLC. All information contained herein shall be confidential except to the extent the information has been previously established. This drawing may not be copied, reproduced, or used as the basis for manufacture or sale without written permission.

AMX LLC
3000 RESEARCH DRIVE
RICHARDSON, TX 75082

SPECIFICATION, MXA-STMK-10,
SECURE TABLE MOUNT KIT, MODERO X

SIZE D	DWG. NO. SP5968-66	REV. A
SCALE 1/1	ACAD FILE NO.	SHEET 3 OF 10

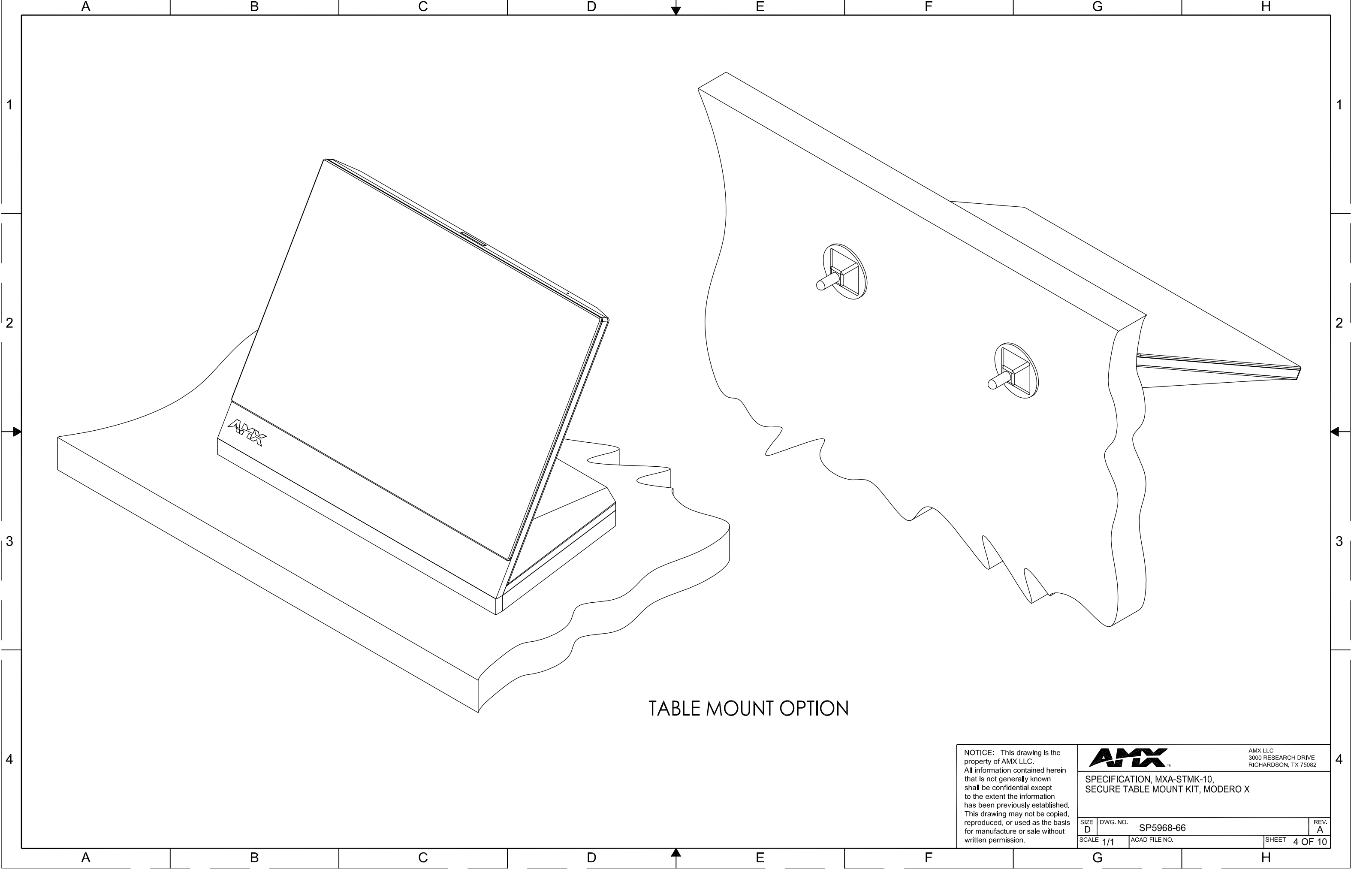



TABLE MOUNT OPTION

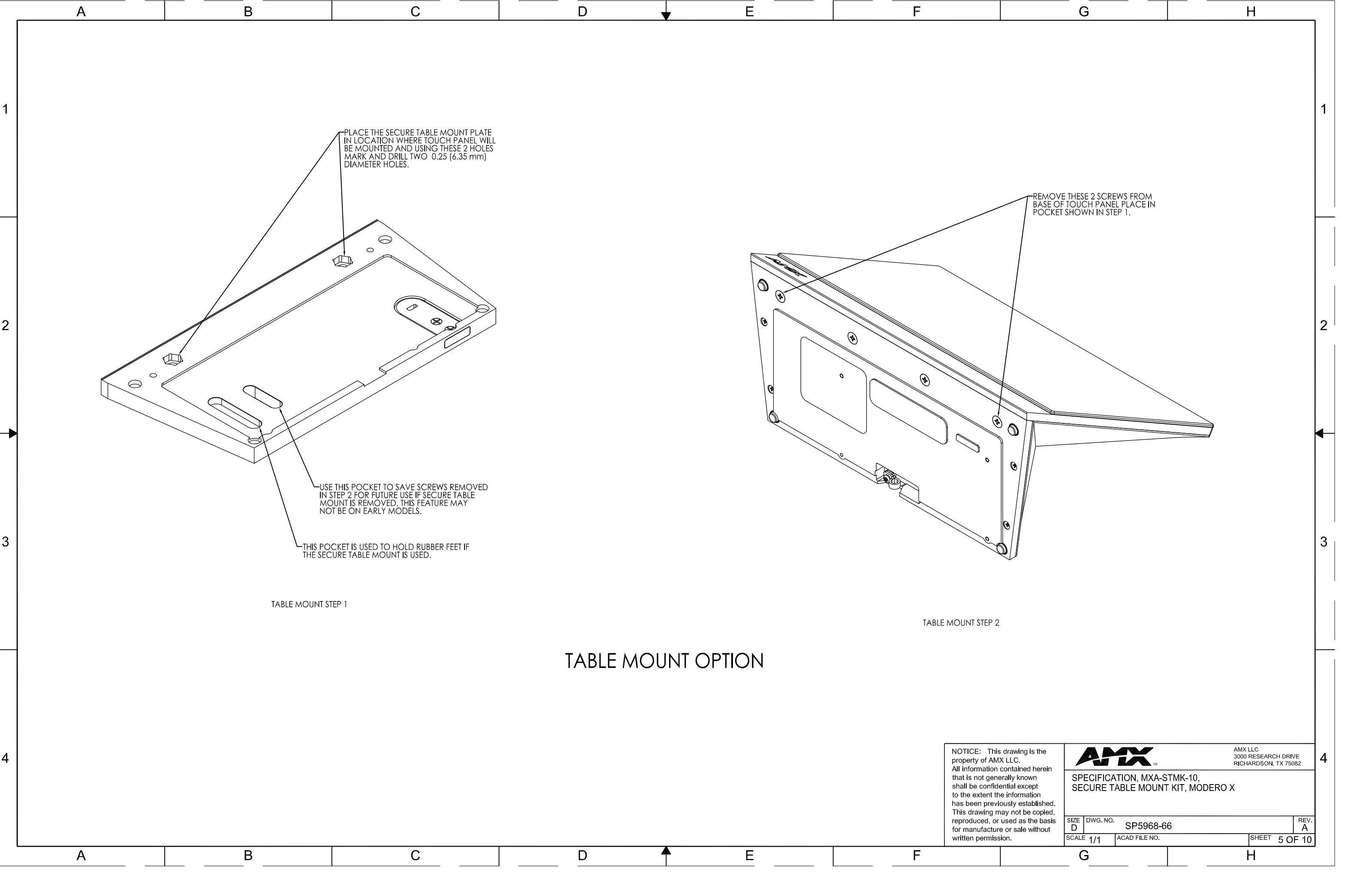
NOTICE: This drawing is the property of AMX LLC. All information contained herein that is not generally known shall be confidential except to the extent the information has been previously established. This drawing may not be copied, reproduced, or used as the basis for manufacture or sale without written permission.



AMX LLC
 3000 RESEARCH DRIVE
 RICHARDSON, TX 75082

SPECIFICATION, MXA-STMK-10,
 SECURE TABLE MOUNT KIT, MODERO X

SIZE D	DWG. NO. SP5968-66		REV. A
SCALE 1/1	ACAD FILE NO.		SHEET 4 OF 10



PLACE THE SECURE TABLE MOUNT PLATE
IN LOCATION WHERE TOUCH PANEL WILL
BE MOUNTED AND USING THESE 2 HOLES
MARK AND DRILL TWO 0.25 (6.35 mm)
DIAMETER HOLES.

USE THIS POCKET TO SAVE SCREWS REMOVED
IN STEP 2 FOR FUTURE USE IF SECURE TABLE
MOUNT IS REMOVED. THIS FEATURE MAY
NOT BE ON EARLY MODELS.

THIS POCKET IS USED TO HOLD RUBBER FEET IF
THE SECURE TABLE MOUNT IS USED.

TABLE MOUNT STEP 1

REMOVE THESE 2 SCREWS FROM
BASE OF TOUCH PANEL PLACE IN
POCKET SHOWN IN STEP 1.

TABLE MOUNT STEP 2

TABLE MOUNT OPTION

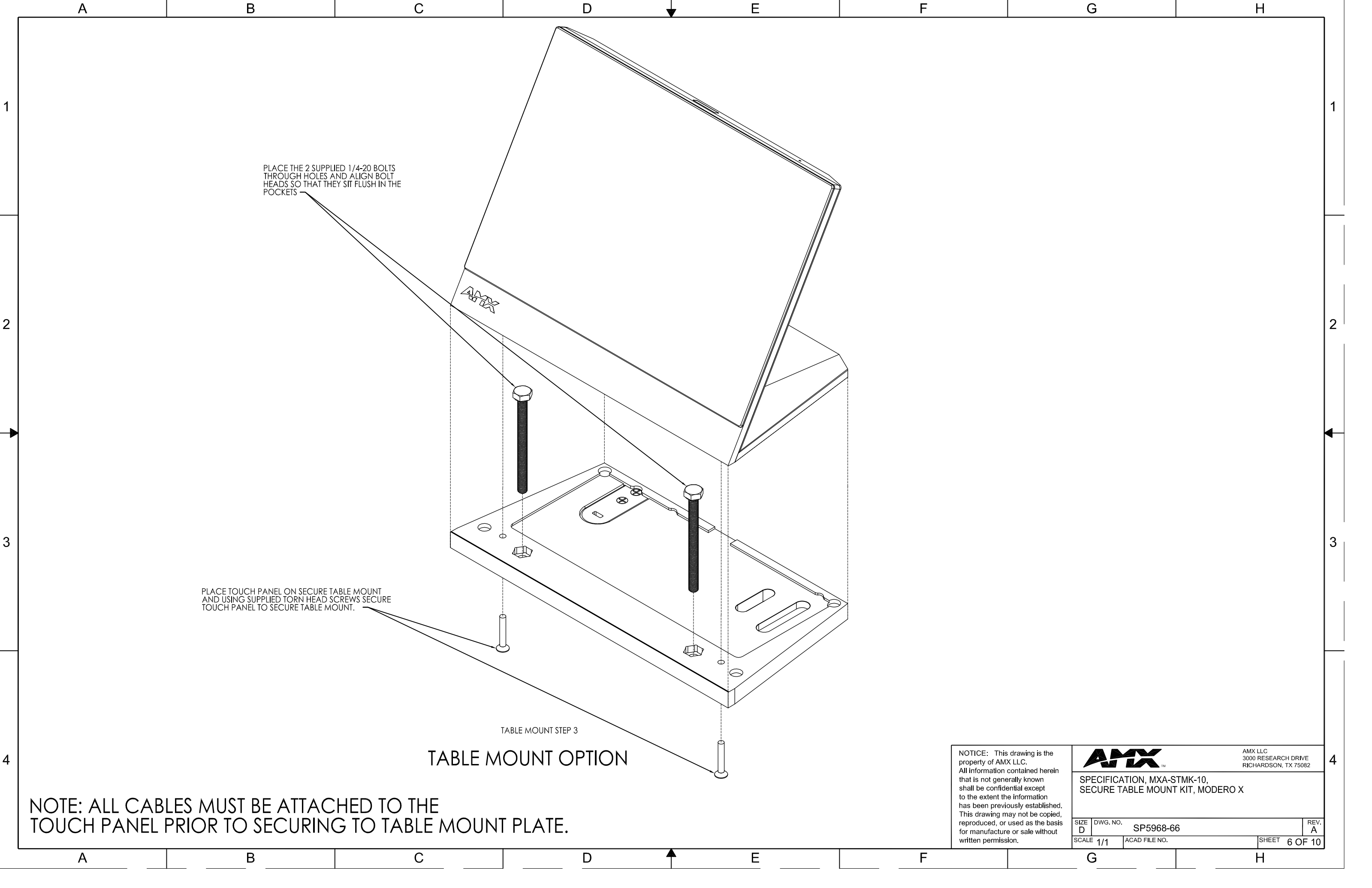
NOTICE: This drawing is the
property of AMX LLC.
All information contained herein
that is not generally known
shall be confidential except
to the extent the information
has been previously established.
This drawing may not be copied,
reproduced, or used as the basis
for manufacture or sale without
written permission.



AMX LLC
3000 RESEARCH DRIVE
RICHARDSON, TX 75082

SPECIFICATION, MXA-STMK-10,
SECURE TABLE MOUNT KIT, MODERO X

SIZE D	DWG. NO. SP5968-66	REV. A
SCALE 1/1	ACAD FILE NO.	SHEET 5 OF 10



PLACE THE 2 SUPPLIED 1/4-20 BOLTS THROUGH HOLES AND ALIGN BOLT HEADS SO THAT THEY SIT FLUSH IN THE POCKETS

PLACE TOUCH PANEL ON SECURE TABLE MOUNT AND USING SUPPLIED TORX HEAD SCREWS SECURE TOUCH PANEL TO SECURE TABLE MOUNT.

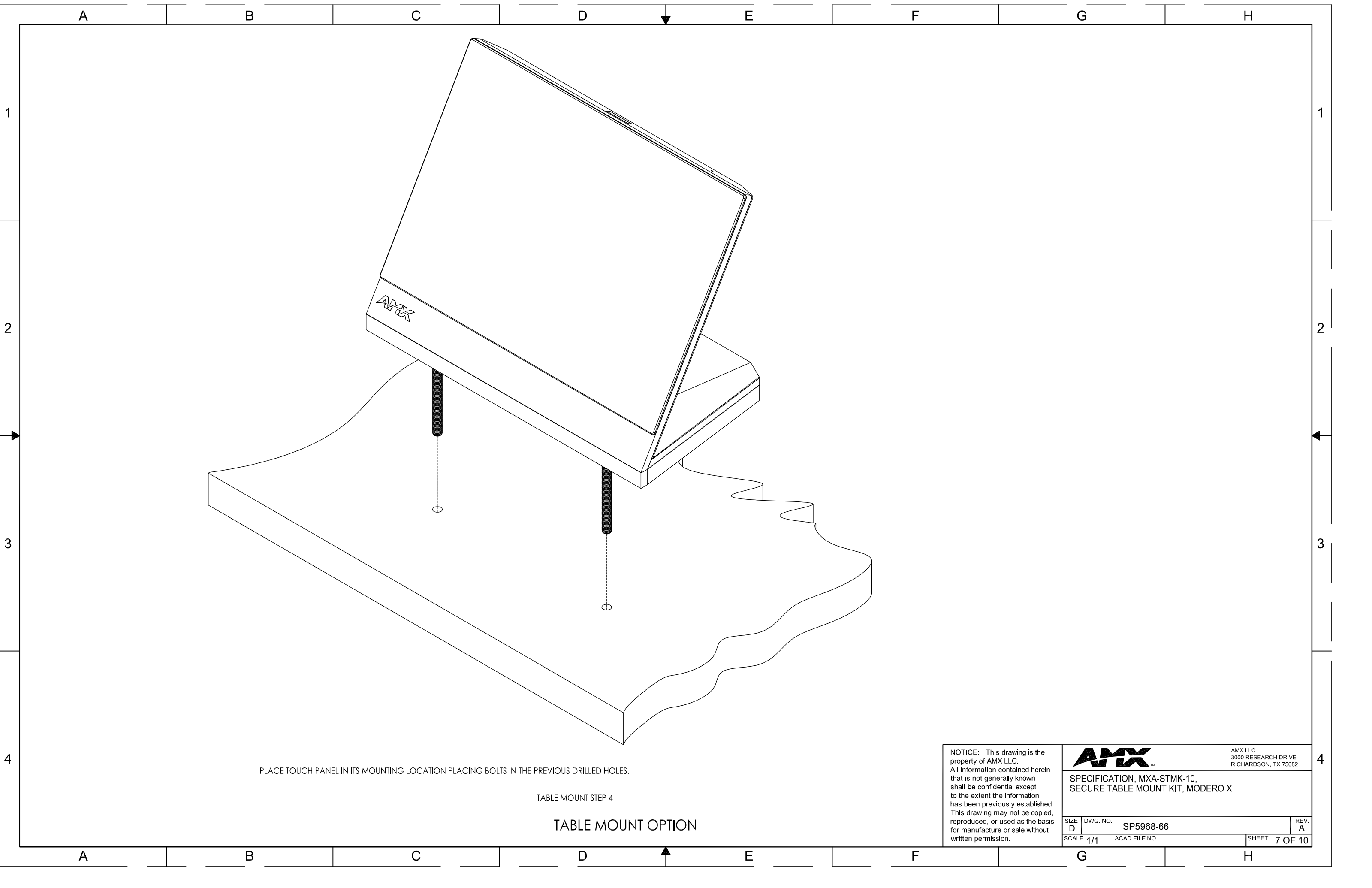
TABLE MOUNT STEP 3

TABLE MOUNT OPTION

NOTE: ALL CABLES MUST BE ATTACHED TO THE TOUCH PANEL PRIOR TO SECURING TO TABLE MOUNT PLATE.

NOTICE: This drawing is the property of AMX LLC. All information contained herein that is not generally known shall be confidential except to the extent the information has been previously established. This drawing may not be copied, reproduced, or used as the basis for manufacture or sale without written permission.


		AMX LLC 3000 RESEARCH DRIVE RICHARDSON, TX 75082	
SPECIFICATION, MXA-STMK-10, SECURE TABLE MOUNT KIT, MODERO X			
SIZE D	DWG. NO. SP5968-66	REV. A	
SCALE 1/1	ACAD FILE NO.	SHEET 6 OF 10	

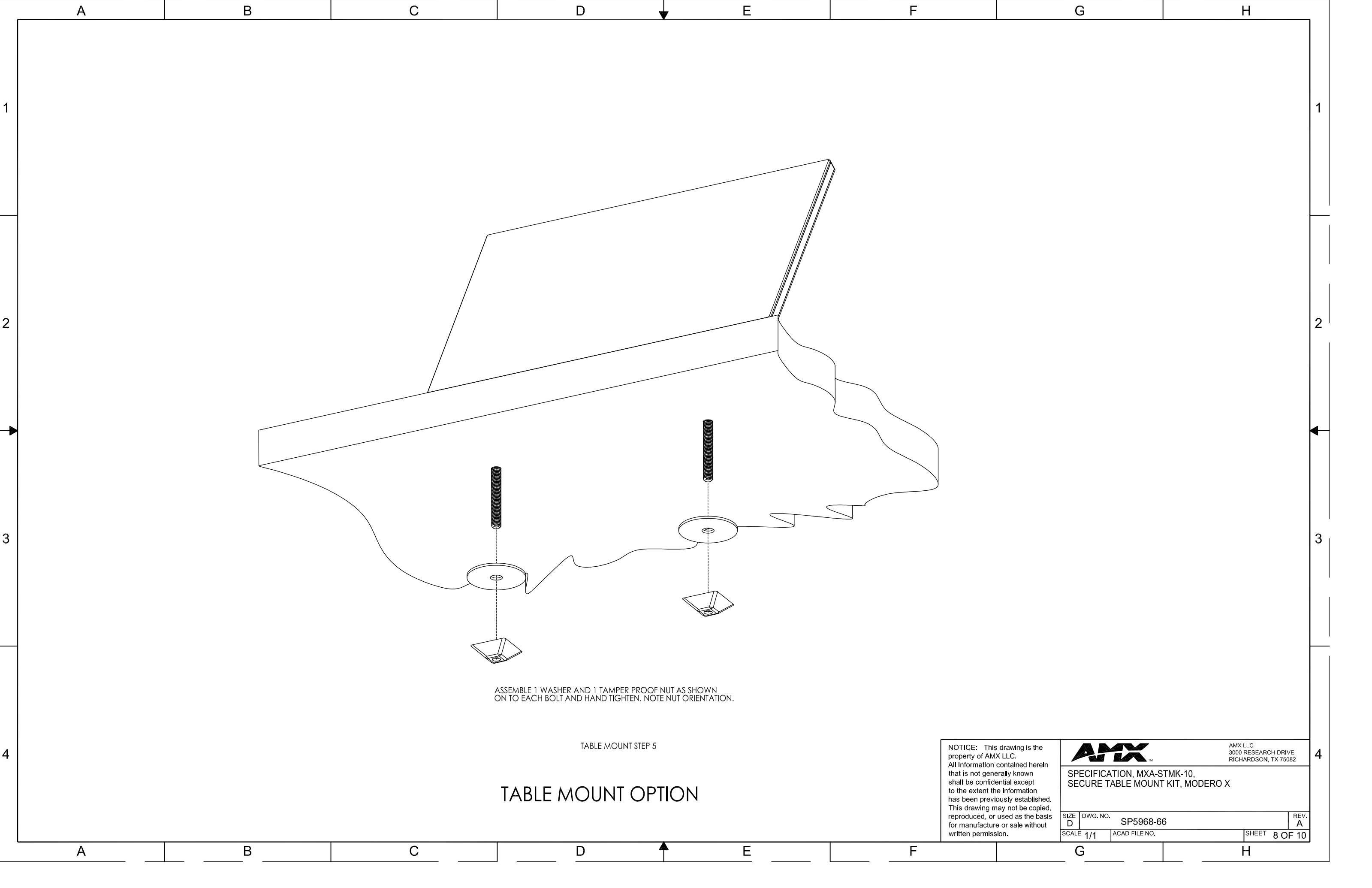


PLACE TOUCH PANEL IN ITS MOUNTING LOCATION PLACING BOLTS IN THE PREVIOUS DRILLED HOLES.

TABLE MOUNT STEP 4

TABLE MOUNT OPTION

<p>NOTICE: This drawing is the property of AMX LLC. All information contained herein that is not generally known shall be confidential except to the extent the information has been previously established. This drawing may not be copied, reproduced, or used as the basis for manufacture or sale without written permission.</p>				AMX LLC 3000 RESEARCH DRIVE RICHARDSON, TX 75082	
		SPECIFICATION, MXA-STMK-10, SECURE TABLE MOUNT KIT, MODERO X			
		SIZE D	DWG. NO. SP5968-66		
SCALE 1/1		ACAD FILE NO.		SHEET 7 OF 10	




ASSEMBLE 1 WASHER AND 1 TAMPER PROOF NUT AS SHOWN ON TO EACH BOLT AND HAND TIGHTEN. NOTE NUT ORIENTATION.

TABLE MOUNT STEP 5

TABLE MOUNT OPTION

NOTICE: This drawing is the property of AMX LLC. All information contained herein that is not generally known shall be confidential except to the extent the information has been previously established. This drawing may not be copied, reproduced, or used as the basis for manufacture or sale without written permission.



AMX LLC
3000 RESEARCH DRIVE
RICHARDSON, TX 75082

SPECIFICATION, MXA-STMK-10,
SECURE TABLE MOUNT KIT, MODERO X

SIZE D	DWG. NO. SP5968-66	REV. A
SCALE 1/1	ACAD FILE NO.	SHEET 8 OF 10

A

B

C

D

E

F

G

H

1

2

3

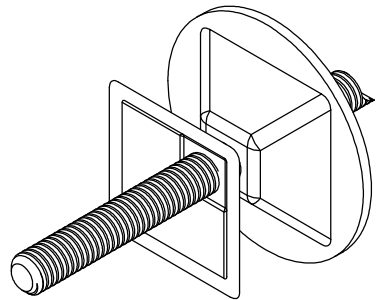
4

1

2

3

4



ASSEMBLE EXTRA TAMPER PROOF NUT AS SHOWN

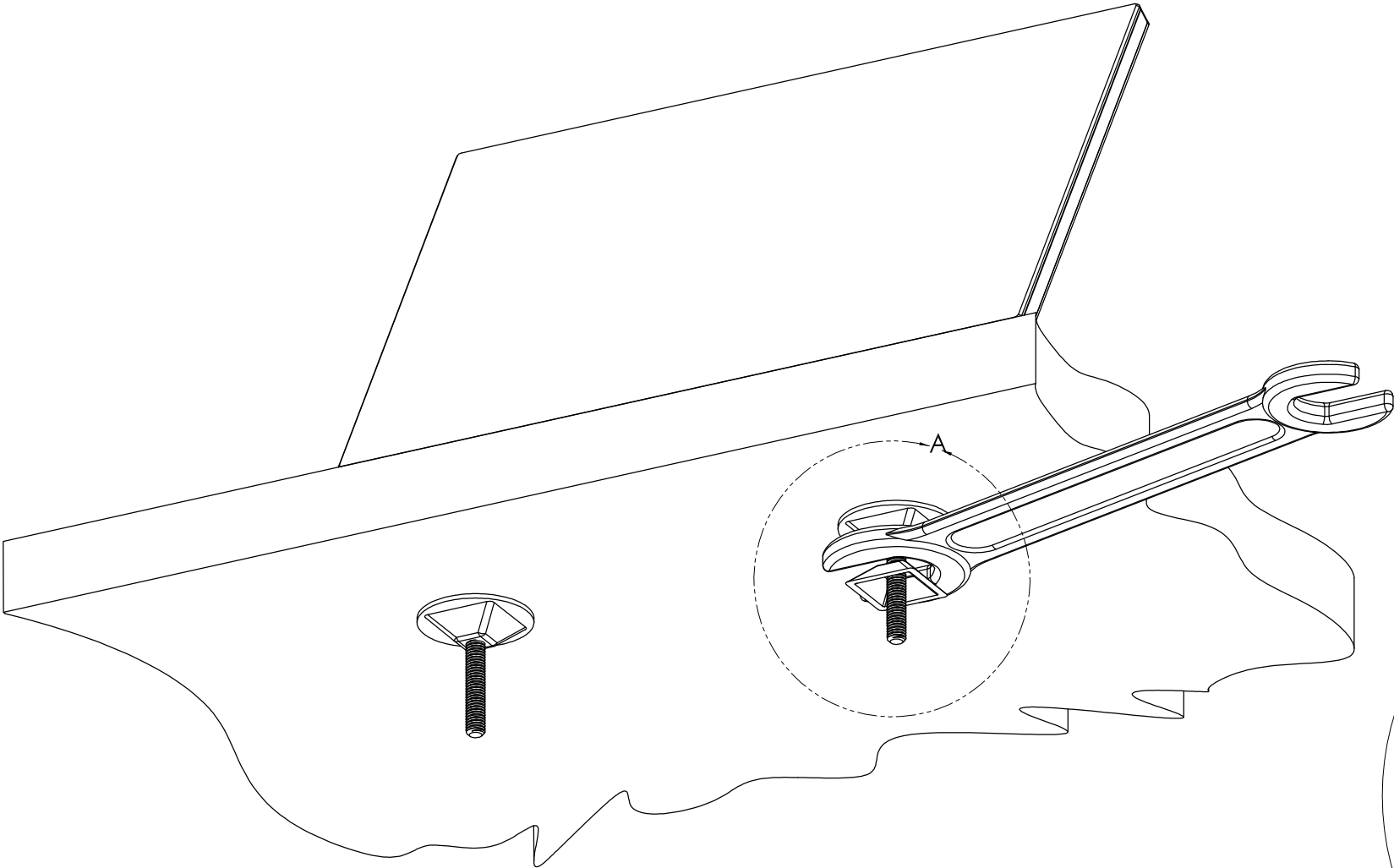
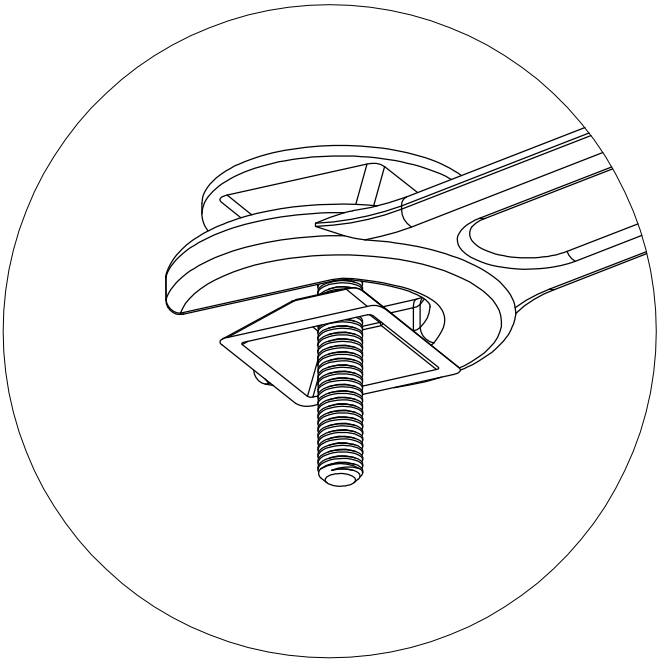


TABLE MOUNT STEP 6



DETAIL A
SCALE 2 : 1

TIGHTEN NUT USING AN ADJUSTABLE OR OPEN BOX WRENCH. HAND ADJUST GAP BETWEEN NUTS TO ALLOW WRENCH TO FIT BETWEEN NUTS AND USING WRENCH TIGHTEN NUT. WHEN SATISFIED REMOVE EXTRA NUT AND REPEAT PROCESS ON THE OTHER BOLT.

TABLE MOUNT OPTION

NOTICE: This drawing is the property of AMX LLC. All information contained herein that is not generally known shall be confidential except to the extent the information has been previously established. This drawing may not be copied, reproduced, or used as the basis for manufacture or sale without written permission.



AMX LLC
3000 RESEARCH DRIVE
RICHARDSON, TX 75082

SPECIFICATION, MXA-STMK-10,
SECURE TABLE MOUNT KIT, MODERO X

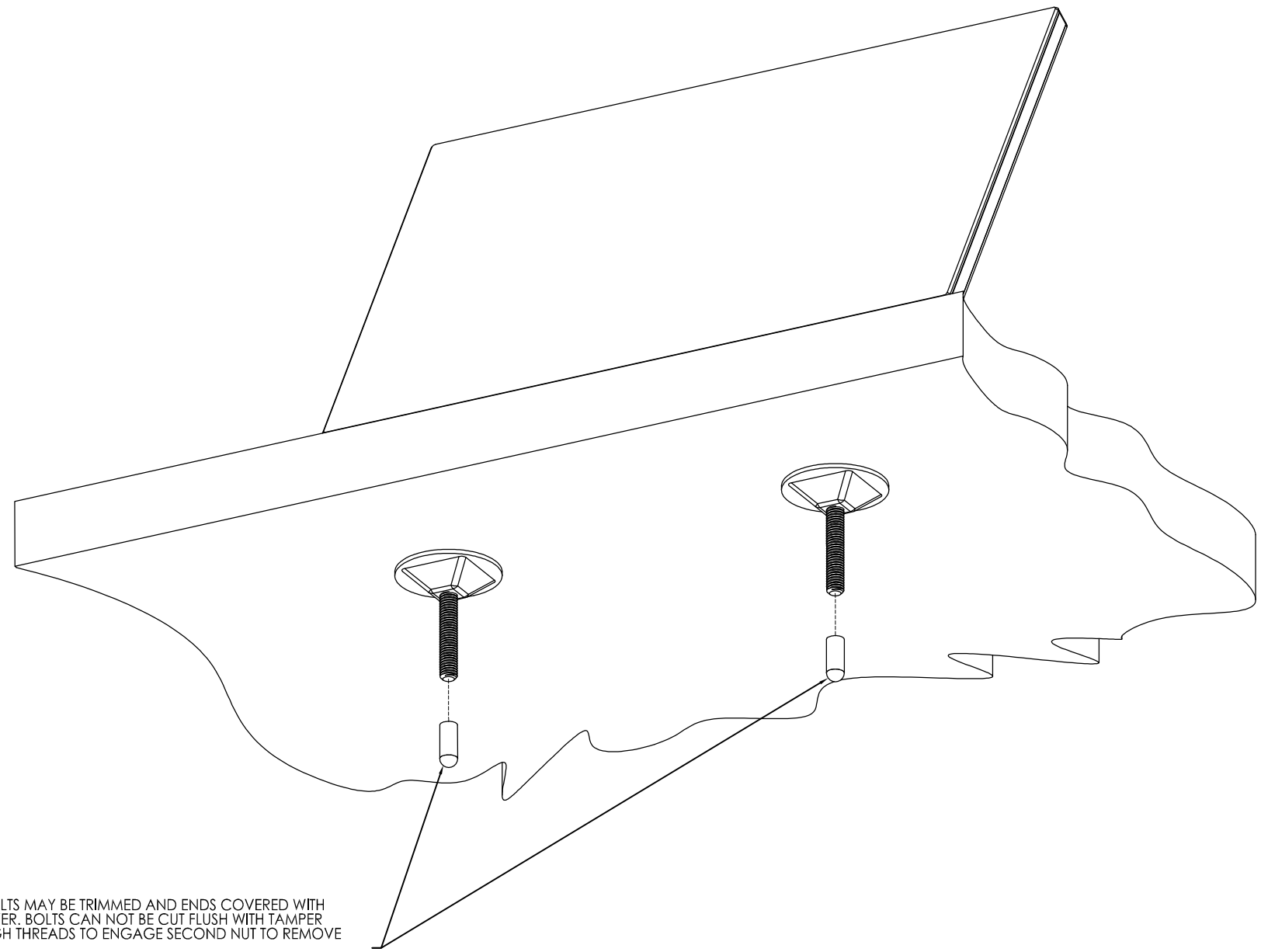
SIZE D DWG. NO. SP5968-66

REV. A

SCALE 1/1 ACAD FILE NO.

SHEET 9 OF 10


IMPORTANT DO NOT TRIM BOLTS FLUSH WITH TAMPER PROOF NUT



AFTER TOUCH PANEL IS SECURE. BOLTS MAY BE TRIMMED AND ENDS COVERED WITH SUPPLIED PROTECTIVE RUBBER COVER. BOLTS CAN NOT BE CUT FLUSH WITH TAMPER PROOF NUT THERE MUST BE ENOUGH THREADS TO ENGAGE SECOND NUT TO REMOVE TOUCH PANEL.

TABLE MOUNT STEP 7

TABLE MOUNT OPTION

<p>NOTICE: This drawing is the property of AMX LLC. All information contained herein that is not generally known shall be confidential except to the extent the information has been previously established. This drawing may not be copied, reproduced, or used as the basis for manufacture or sale without written permission.</p>				AMX LLC 3000 RESEARCH DRIVE RICHARDSON, TX 75082	
		SPECIFICATION, MXA-STMK-10, SECURE TABLE MOUNT KIT, MODERO X			
		SIZE D	DWG. NO. SP5968-66	REV. A	
SCALE 1/1		ACAD FILE NO.		SHEET 10 OF 10	