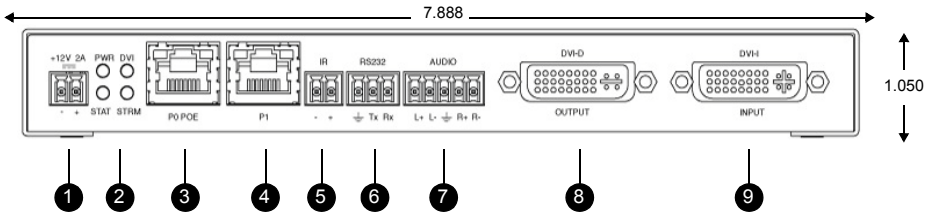


N2000 QUICK START

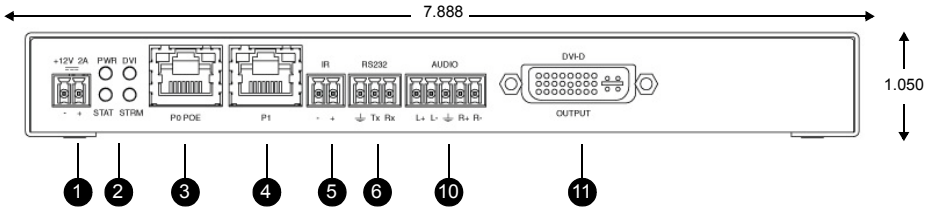


Congratulations on the purchase of your N2000 series product — part of SVSi's family of Networked AV products. SVSi's N2000 product line includes the N2121 and N2141 encoders and the N2211, N2221, and N2241 decoders. An SVSi Networked AV system comprises video and/or audio encoders, decoders, and other network accessories including recording solutions, multi-window processing, audio-only end points, and system controllers. The system allows you to distribute HD Video, Audio and Control across a gigabit Ethernet network. Options are available for recording, playback, and wall processing.

N2000 Series Encoder Rear View



N2000 Series Decoder Rear View



- | | |
|--|------------------------------------|
| 1) 12VDC Input (not needed with PoE) | 6) RS232 Connection |
| 2) Status Indicators | 7) Analog Audio Input Connection* |
| 3) RJ45 Auto-Sensing Gigabit Ethernet Switch Port — PoE* | 8) Pass-Through DVI-D Connection |
| 4) RJ45 Auto-Sensing Gigabit Ethernet Switch Port | 9) DVI-I Digital Input |
| 5) Infrared (IR) Emitter Connection* | 10) Analog Audio Output Connection |
| | 11) DVI-D Digital Output |

*Not available on the N2211 Decoder.

Network Bandwidth per video stream = 20-500Mbps (user-selectable). Units can be daisy-chained or connected to a gigabit Ethernet layer-3 switch supporting IGMP-query. Please contact SVSi to obtain a pre-configured switch, or more details regarding daisy-chaining limitations.

The **DVI-I** connector on the N2000 encoder auto-senses either analog or digital video and converts input video to network packets for output through the RJ45 connector. Audio can be input as embedded digital audio through the **DVI-I** connector or as balanced analog audio through the 5-pin phoenix **AUDIO** connector. Both encoder and decoder can be powered either using the 12V optional external power supply or by Power-over-Ethernet (PoE).

The N2000 series decoder accepts the network packets and reconstitutes synchronized video and audio for display through its **DVI-D** port. Digital-only video is output by the decoder. IR and serial commands can be transmitted by either encoder or decoder using SVSi's free N-Able configuration software, SVSi's N8000-series controller, or using third party controllers. IR and **RS232** serial ports are not pass-through and must use a central controller to direct commands to each device.

Installing and Configuring Your New Networked AV Product

Before using your N2000 unit, it must be configured using SVSi's free N-Able software (formally called Conductor NetLite software). Please download N-Able for PC or Mac at <http://svsiav.com/support/resources/software>.

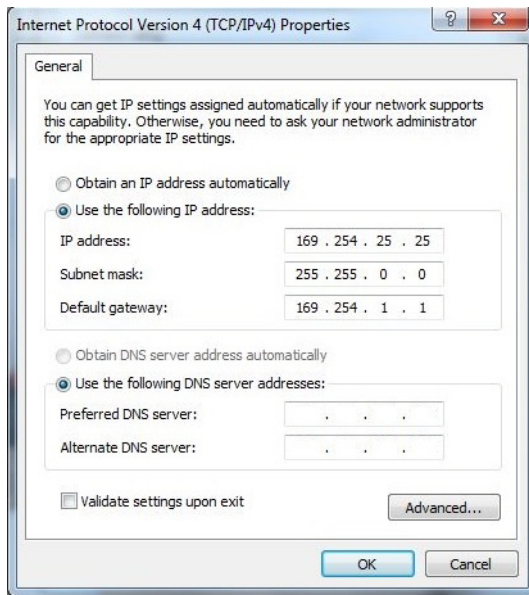
Steps for auto discovering devices on the network:

1. Download and install N-Able.
2. Attach devices to the managed network switch.
3. Disable the wireless adapter on your computer (it must be hard-wired to the switch).
4. Connect the host PC running N-Able to the network switch.
5. Open the N-Able application.
6. Discover the devices on your network by clicking **Auto Discover** on the **Unit Management** tab.

Auto discovery is a broadcast command and will discover all units even if they are not in the same IP subnet. However, you will not be able to configure units until they are in the same subnet as the host PC. N-Series devices are shipped in Auto-IP mode with a default IP address of 169.254.xxx.xxx. Before attempting configuration, some changes must be made to the host PC.

Steps for IP address configuration (for Windows 8):

1. Select **Control Panel > Network and Sharing Center** from the **Start** menu.
2. Select **Change adapter settings**.
3. Select the wired interface connected to your AV network.
4. Click the **Properties** button.
5. Scroll down in the list to the **Internet Protocol Version 4 (TCP/IPv4)** option. Highlight it and click the **Properties** button. The screen shown below is displayed.
6. Enable the **Use the following IP address** option, and enter the static IP address provided to you by your network administrator.



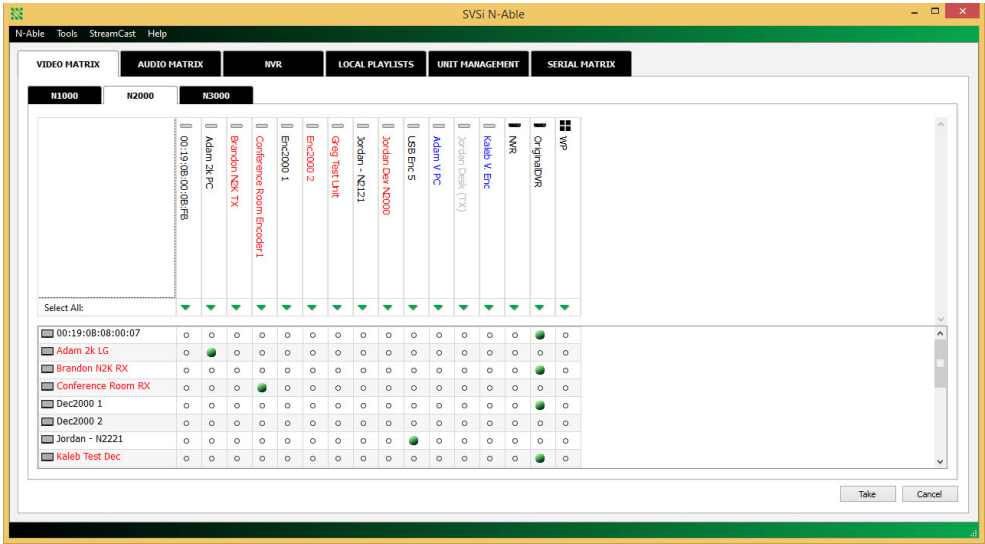
Note: If the PC does not need Internet access, you can simply enter a unique 169.254.xxx.xxx **IP address** with a 255.255.0.0 **Subnet mask**. Please contact your network administrator if you are unsure of how to configure the existing interface.

Note: If the PC has a statically-assigned IP address, click on the **Advanced** button. Then click **Add** to enter a unique 169.254.xxx.xxx address with a subnet of 255.255.0.0.

Understanding the N-Able Interface

Once the host IP address is configured properly, you can view all discovered units using the N-Able software. The N2000 units are displayed on the following tabs:

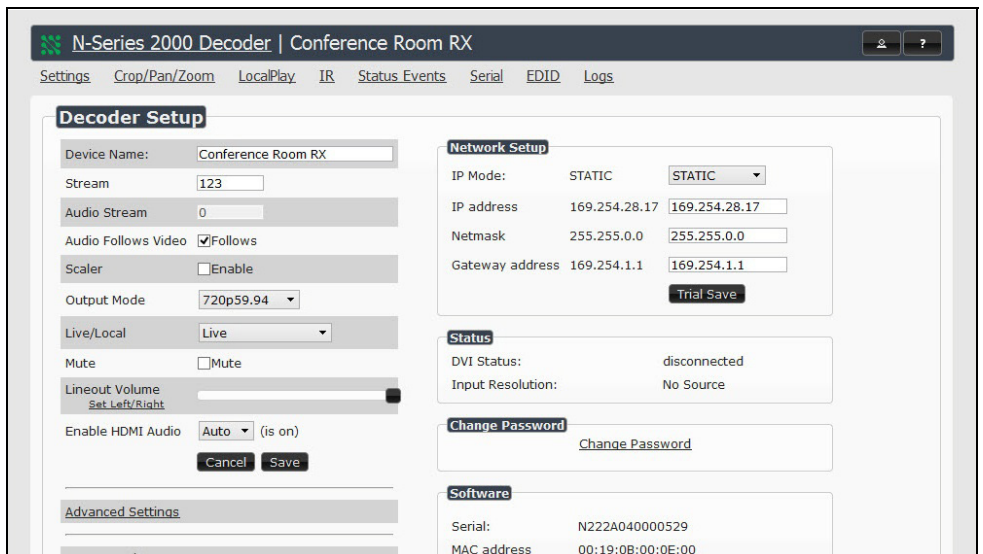
- **Unit Management** tab — N2000 units have **N2000 Encoder/Decoder** listed in their **Type** fields.
- **Video Matrix** tab — N2000 units are found on the **N2000** sub-tab of the **Video Matrix** screen (as shown below).



Red Text - No video source (encoder) or no display (decoder).
Gray Text - Video output for this unit is disabled.

Black Text - Unit is in live play mode.
Blue Text - Unit is playing locally-stored content.

In the **Video Matrix** tab encoder devices are displayed in columns and decoder devices are displayed in rows. 'Mouse' over any column or row to view tooltips providing critical information about each device. Double-click any device to view its control page (shown below). Enter **admin** and **password** as the default username and password.



Troubleshooting Guidelines

Problem	Possible Solutions
“Local Play” graphic is displayed.	<ul style="list-style-type: none"> • Verify decoder is assigned to view a valid stream in the N-Able matrix. • Verify decoder is currently in “live play” mode (black text on matrix view). • Verify network is properly configured and set up. If needed, connect encoder directly to decoder to verify network issues.
“Host Play” graphic is displayed.	<ul style="list-style-type: none"> • Verify encoder is in live play mode (black text in matrix). • Verify source is attached and is outputting a valid signal (DVI light on encoder is lit).
“Unsupported Resolution” graphic is displayed.	<ul style="list-style-type: none"> • Change source resolution to a valid resolution (try 720p60). • Verify cabling is correct.
“Copy Protected Content” screen is displayed.	<ul style="list-style-type: none"> • Contact SVSi technical support.
Black screen/no graphic is displayed.	<ul style="list-style-type: none"> • Set decoder to local play. If the local play graphic does not appear, check the display input settings and cabling. • If local play appears, set decoder to live play and verify network is configured properly.
No Audio is detected.	<ul style="list-style-type: none"> • If there is no audio on <u>all</u> decoders, verify audio settings are correct on encoder. • If there is no audio on a <u>single</u> decoder, verify audio settings are correct on decoder.

Optional Accessories:

N9312 12V External Power Supply

N9102 1RU Rack Shelf

(holds 2 stand-alone units)

N9206 2RU Card Cage (holds 6 cards)

N9101 Rack Mounting Wings

N6123 Dual-Channel Networked Video Recorder

N9382 1RU 12V/16-unit power supply


N2510 4x1 Windowing Processor

Please contact SVSi technical support at support@svsiav.com or 256.461.7143 x9900 for any installation issues. Visit our support webpage at support.svsiav.com.

Distribution | Switching | Recording | Windowing | Wall Processing | Control

© Southern Vision Systems, Inc. • 256. 461.7143 • www.svsiav.com

SVSi is a trademark of Southern Vision Systems, Inc. in the United States and other countries.
800DOCN2000QSRREV2.2

 Made in the USA.

