



INSTRUCTION MANUAL

# RPM (RAPID PROJECT MAKER) TOUCH PANEL CONFIGURATION GUIDE

NSS-RPM

Settings	
Brightness	
<input checked="" type="checkbox"/> Main Video Projector	Power <span style="float: right;"> <input type="button" value="Off"/> <input type="button" value="On"/> </span>
<input type="checkbox"/> Backup Projector	Picture Mode <span style="margin-left: 20px;"><input type="button" value="Aspect Cycle"/></span> <span style="float: right;"><input type="button" value="Input Cycle"/></span>
<input type="checkbox"/> Front TV	Lamp Hours 0 Hrs
<input type="checkbox"/> Rear TV	Status Message
Configuration	
Diagnostics	Screen <span style="float: right;"> <input type="button" value="▼"/> <input type="button" value="▲"/> </span>
<input checked="" type="checkbox"/> Done	Projector Lift <span style="float: right;"> <input type="button" value="▼"/> <input type="button" value="▲"/> </span>

## **COPYRIGHT NOTICE**

AMX© 2016, all rights reserved. No part of this publication may be reproduced, stored in a retrieval system, or transmitted, in any form or by any means, electronic, mechanical, photocopying, recording, or otherwise, without the prior written permission of AMX. Copyright protection claimed extends to AMX hardware and software and includes all forms and matters copyrightable material and information now allowed by statutory or judicial law or herein after granted, including without limitation, material generated from the software programs which are displayed on the screen such as icons, screen display looks, etc. Reproduction or disassembly of embodied computer programs or algorithms is expressly prohibited.

## **LIABILITY NOTICE**

No patent liability is assumed with respect to the use of information contained herein. While every precaution has been taken in the preparation of this publication, AMX assumes no responsibility for error or omissions. No liability is assumed for damages resulting from the use of the information contained herein. Further, this publication and features described herein are subject to change without notice.

## **AMX WARRANTY AND RETURN POLICY**

The AMX Warranty and Return Policy and related documents can be viewed/downloaded at [www.amx.com](http://www.amx.com).

# Table of Contents

<b>RPM - Touch Panel Configuration Guide .....</b>	<b>5</b>
<b>Overview .....</b>	<b>5</b>
RPM Configuration Manager.....	5
<b>Accessing the Touch Panel Configuration Pages.....</b>	<b>5</b>
<b>Panel Configuration Pages - Navigation Options .....</b>	<b>6</b>
<b>Brightness .....</b>	<b>6</b>
<b>Display 1-4.....</b>	<b>7</b>
Power .....	7
Picture Mode.....	7
Lamp Hours.....	7
Status.....	7
Screen.....	7
Projector Lift.....	7
<b>System Configuration Page.....</b>	<b>7</b>
Room Off Timer .....	7
Display Delays.....	7
Enova .....	7
<b>Room Off Timer Configuration Page .....</b>	<b>8</b>
Set Time .....	8
Auto-Off .....	8
Inactivity.....	8
Passwords .....	8
Screen Relays .....	8
Lift Relays .....	8
Shade Relays .....	8
<b>Display Delay Configuration Page .....</b>	<b>9</b>
Display 1-4.....	9
Off Delay.....	9
On Delay.....	9
<b>Enova Configuration Page .....</b>	<b>9</b>
Horizontal Shift Input <x> .....	9
<b>Passwords Page.....</b>	<b>10</b>
System.....	10
Settings.....	10
Setting System and Settings Passwords.....	10
<b>Screen Relays Page .....</b>	<b>11</b>
Screen 1-4 .....	11
Up, Down & Stop .....	11
.5 Sec Pulse.....	11
Maintained (Latching) .....	11
Timed.....	11
<b>Lift Relays Page.....</b>	<b>11</b>
<b>Shade Relays Page.....</b>	<b>12</b>
Shade 1-4 .....	12
Open, Close & Stop .....	12
.5 Sec Pulse.....	12
Maintained (Latching) .....	12
Timed.....	12
Push ON Release OFF.....	12
<b>Setting the Value for a Timed Relay Function .....</b>	<b>12</b>
Lift 1-4 .....	12
Up, Down & Stop .....	12

.5 Sec Pulse..... 12

Maintained (Latching) ..... 12

Timed ..... 12

Push ON Release OFF ..... 12

**Diagnostics ..... 14**

**Device Diagnostics Pages ..... 14**

**Exiting the Panel Configuration Pages ..... 15**

    Display 1-4..... 15

    Initialized..... 15

    Comm..... 15

# RPM - Touch Panel Configuration Guide

## Overview

This document describes the touch panel configuration options available via the Touch Panel UI file generated by the RPM web application. The options in these pages allow you to configure various aspects of the RPM system.

**NOTE:** *The Panel Configuration pages described in this section are hidden from the end-user and are password-protected; they are intended to be used only by a technician as part of the installation process.*

## RPM Configuration Manager

The Panel Configuration pages described in this section are only available for panels that use the "Theme 1" option (as selected in the *UI Themes* page of the RPM UI):



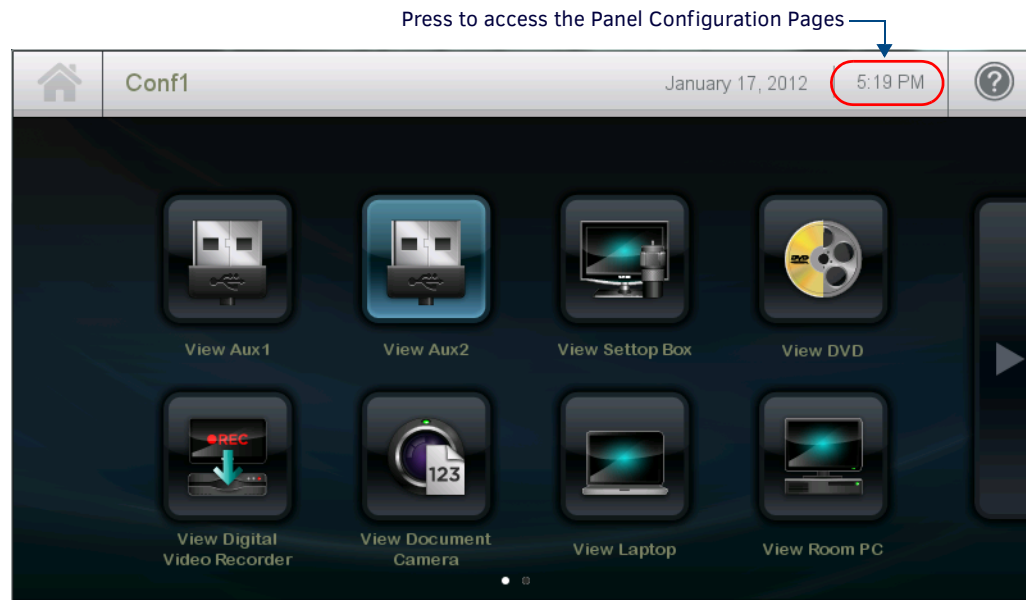
**FIG. 1** RPM UI - UI Themes page: Themes

- Panel Configuration pages are not available for panels that use the "Theme 2" UI option.
- Note that the "Theme 2" option is only available for certain panel types.

Panels that use Theme 2 will utilize the *RPM Configuration Manager*, which resides on the NetLinX Master (rather than the Panel Configuration pages described here). For information on using the *RPM Configuration Manager*, refer to the *RPM Configuration Manager Instruction Manual* (available to view/download via [www.amx.com](http://www.amx.com)).

## Accessing the Touch Panel Configuration Pages

On the main page, press the Time display in the header of the Home page (FIG. 2):

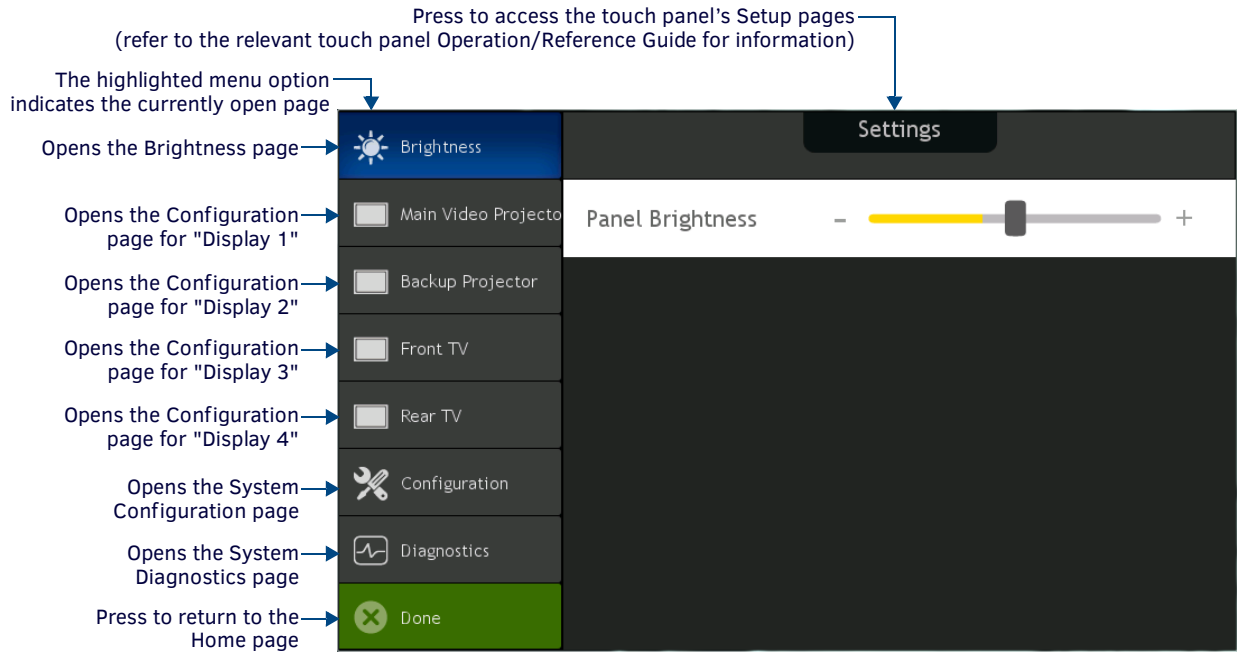


**FIG. 2** RPM Touch Panel - Home Page (Accessing the Configuration Pages)

This opens the first of the configuration pages - the *Brightness* page. See the *Brightness* section on page 6 for details.

## Panel Configuration Pages - Navigation Options

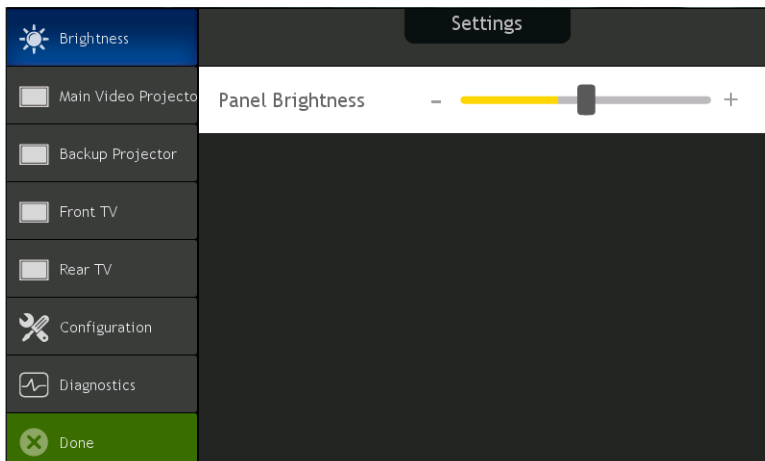
Each configuration page includes a navigation menu along the left side of the page that provides access to the other Configuration pages, as well as **Settings** button in the top center of the page that provides access to the panel's Setup and Protected Setup pages. FIG. 3 indicates the navigation options available on all Configuration pages.



**FIG. 3** Brightness Configuration Page (Navigation Options)

## Brightness

Press the **Brightness** button in the navigation menu to access the *Panel Brightness* page shown in FIG. 4:



**FIG. 4** Brightness Configuration Page

Use the slider control to adjust the brightness setting on the touch panel's display.

## Display 1-4

Press the four **Display Device** buttons (following the Brightness button) in the Navigation Menu to open the *Display Configuration* pages for Displays 1 through 4 (FIG. 5):

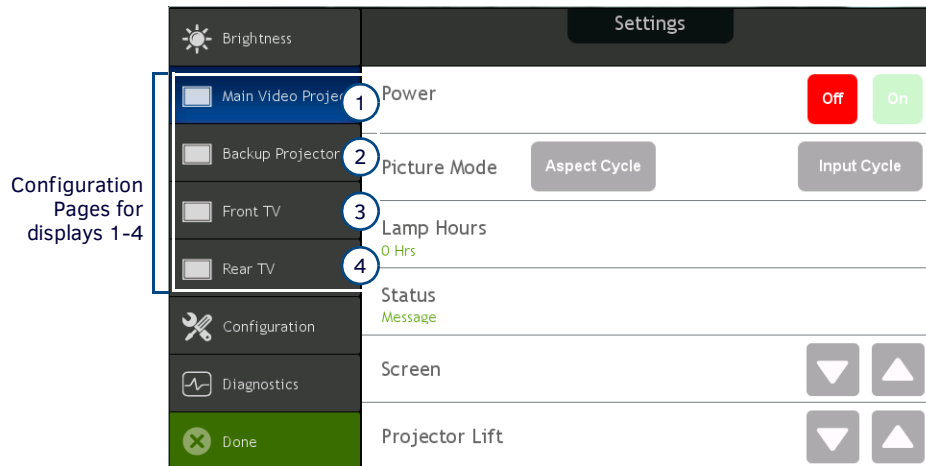


FIG. 5 Display Configuration page (Display 1 selected)

**NOTE:** The names displayed in the Display 1-4 buttons reflect the names assigned to Displays 1-4 in RPM. Also note that if the RPM project specifies less than four Display devices, some of the Display Device buttons will be blank.

The options on this page are described below:

Display 1-4 Configuration Pages - Options	
<b>Power</b>	The highlighted button (Off / On) indicates the current power state of the selected Display.
<b>Picture Mode</b>	<ul style="list-style-type: none"> <li>Aspect Cycle - Press to cycle through the aspect ratios supported by the selected Display.</li> <li>Input Cycle - Press to cycle through the inputs supported by the selected Display.</li> </ul>
<b>Lamp Hours</b>	Indicates the current number of Lamp Hours that have accumulated for the selected Display. Note that if the selected device does not use a lamp (as in the case of a monitor) or report lamp usage, this field will remain empty.
<b>Status</b>	Indicates the current Status of the selected Display.
<b>Screen</b>	Press the Up and Down arrow buttons to raise or lower the screen for the selected Display (if applicable).
<b>Projector Lift</b>	Press the Up and Down arrow buttons to raise or lower the projector for the selected Display (if applicable).

## System Configuration Page

Press the **Configuration** button in the Navigation Menu to open the *System Configuration* page (FIG. 6):

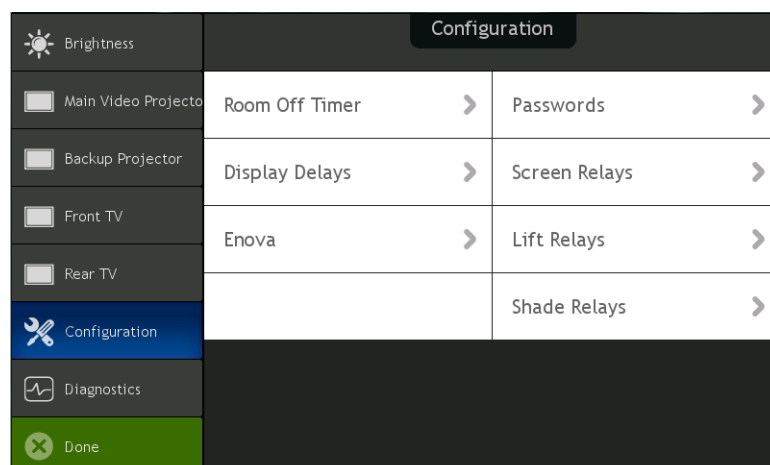


FIG. 6 System Configuration Page

The options on this page are described below:

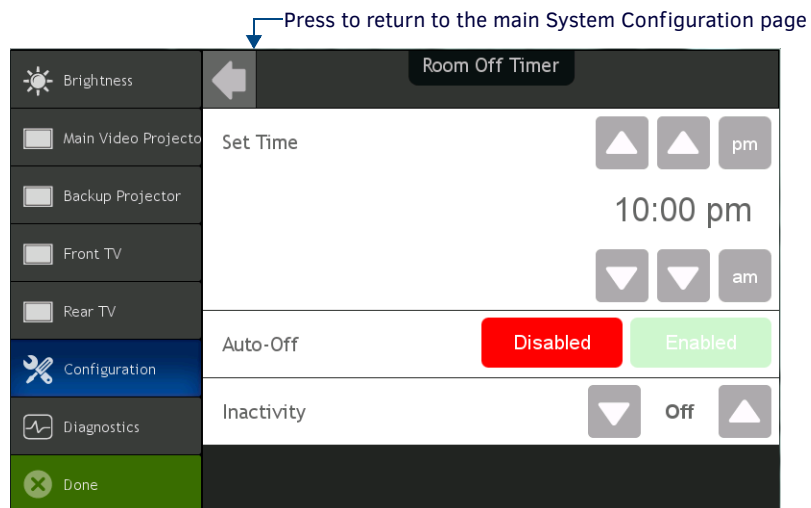
System Configuration Page - Options	
<b>Room Off Timer</b>	Press to access the <i>Room Off Timer</i> Configuration page (see below).
<b>Display Delays</b>	Press to access the <i>Display Delay</i> Configuration page (see page 9).
<b>Enova</b>	Press to access the <i>Enova</i> Configuration page (see page 9).

System Configuration Page - Options (Cont.)	
<b>Passwords</b>	Press to access the <i>Passwords</i> Configuration page (see page 10).
<b>Screen Relays</b>	Press to access the <i>Screen Relays</i> Configuration page (see page 11).
<b>Lift Relays</b>	Press to access the <i>Lift Relays</i> Configuration page (see page 11).
<b>Shade Relays</b>	Press to access the <i>Shade Relays</i> Configuration page (see page 11).

**NOTE:** The options presented in the Touch Panel Configuration pages reflect the RPM project associated with the panel. Therefore, some of the options indicated in this document may not be included on your panel. For example, the *Enova* option shown in FIG. 6 is not presented if a *NI Master* was selected as the *AMX Controller*.

### Room Off Timer Configuration Page

Press **Room Off Timer** in the main Configuration page to open the *Room Off Timer Configuration Page* (FIG. 7):



**FIG. 7** Room Off Timer Configuration Page

Room Off Timer Configuration Page - Options	
<b>Set Time</b>	Use the Up and Down arrow buttons to adjust the hour and minute values for the Room Auto-Off Timer. <ul style="list-style-type: none"> <li>Press <i>pm</i> or <i>am</i> to set the time period.</li> <li>The default setting is 10:00 pm.</li> </ul>
<b>Auto-Off</b>	<ul style="list-style-type: none"> <li>Press the <i>Disabled</i> button to disable the Room Off Timer for the selected Display. By default, Auto-Off is disabled.</li> <li>Press the <i>Enabled</i> button to enable the Room Off Timer for the selected Display. When enabled, auto-off will occur at the time specified for <i>Set Time</i>.</li> </ul>
<b>Inactivity</b>	Use the Up and Down arrow buttons to adjust the amount of inactivity time allowed before the panel goes to sleep. <ul style="list-style-type: none"> <li>By default, Inactivity is set to zero (disabled).</li> <li>The minimum setting is 30 minutes, and the value can be adjusted in 10-minute increments to a maximum of 180 minutes.</li> </ul>



## Display Delay Configuration Page

Press **Display Delays** in the main Configuration page to open the *Display Delay Configuration Page* (FIG. 8):

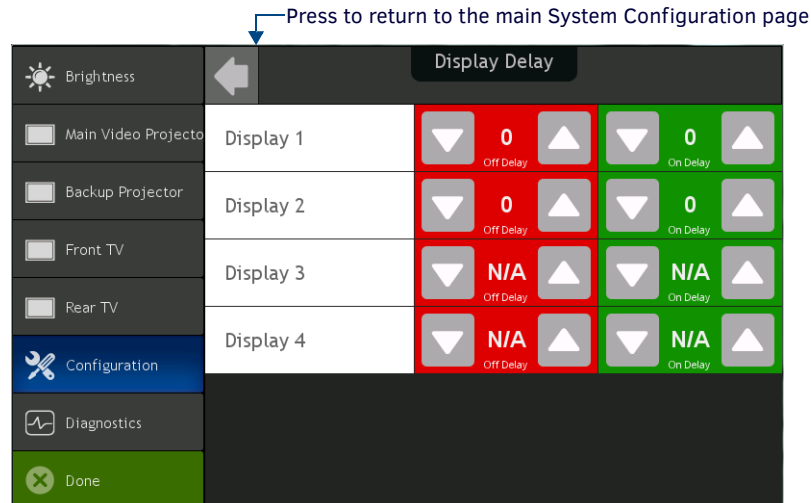


FIG. 8 Display Delay Configuration Page

Display Delay Configuration Page - Options	
<b>Display 1-4</b>	Each of the displays specified in RPM are indicated (up to four), each with it's own set of Up and Down arrow buttons for <i>Off Delay</i> and <i>On Delay</i> settings. <ul style="list-style-type: none"> <li>• Displays that do not support Off and On Delay settings will display "N/A" in these fields.</li> <li>• By default, Off and On Delay is set to zero (disabled) for all Displays.</li> </ul>
<b>Off Delay</b>	For each Display listed, use the Up and Down arrows to adjust the <i>Off Delay</i> time for the Display.
<b>On Delay</b>	For each Display listed, use the Up and Down arrows to adjust the <i>On Delay</i> time for the Display.

## Enova Configuration Page

Press **Enova** in the main Configuration page to open the *Enova Configuration Page* (FIG. 9):

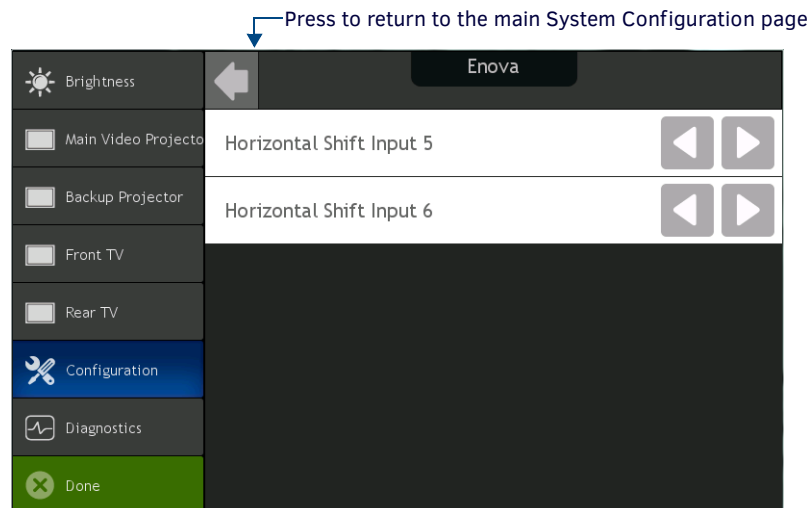


FIG. 9 Enova Configuration Page

Enova Configuration Page - Options	
<b>Horizontal Shift Input &lt;x&gt;</b>	Use the Left and Right arrow buttons to adjust the Horizontal Shift on the Enova.

## Passwords Page

Press **Passwords** in the main Configuration page to open the *Passwords Configuration Page* (FIG. 10):

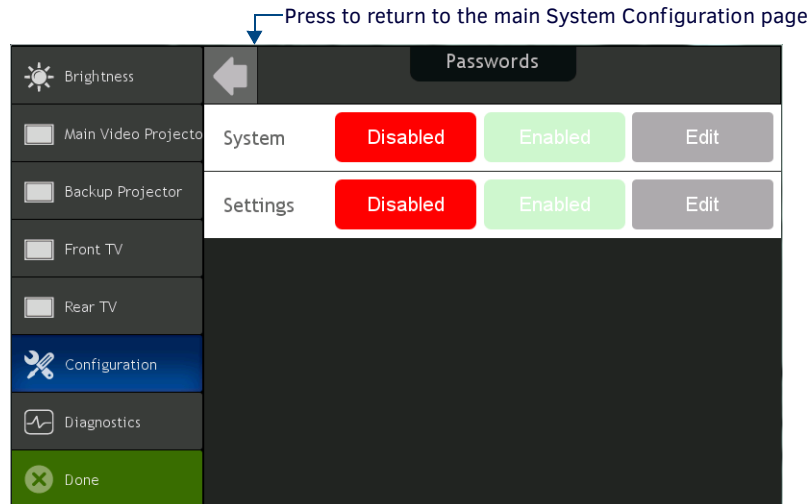


FIG. 10 Passwords Configuration Page

Passwords Configuration Page - Options	
<b>System</b>	<p>The <i>System</i> password allows access to the Main page on the Touch Panel. If a <i>System</i> password is set, all users will be required to enter it in order to use this touch panel.</p> <ul style="list-style-type: none"> <li>The default <i>System</i> password is <b>1988</b>.</li> <li>The <i>System</i> password equates to the <i>Password 1</i> setting in the Panel's Setup pages.</li> <li>See the <i>Setting System and Settings Passwords</i> section on page 10 for details.</li> </ul>
<b>Settings</b>	<p>The <i>Settings</i> password allows access to the Setup pages on the Touch Panel. If a <i>Settings</i> password is set, users will be required to enter it in order to access the Setup pages on this touch panel.</p> <ul style="list-style-type: none"> <li>The default <i>Settings</i> password is <b>1988</b>.</li> <li>The <i>Settings</i> password equates to the <i>Password 2</i> setting in the Panel's Setup pages.</li> <li>See the <i>Setting System and Settings Passwords</i> section on page 10 for details.</li> </ul>

**NOTE:** Both the *System* and *Settings* passwords are disabled by default.

### Setting System and Settings Passwords

- Press the Time display in the header of the Home page to access the Touch Panel Configuration Pages (see FIG. 2 on page 5).
- Press **Configuration** in the Navigation Menu to access the *System Configuration* page (see FIG. 6 on page 7).
- Press **Passwords** to open the *Passwords Configuration* page (see FIG. 10 on page 10).
- Press the **Edit** button for each password to invoke an on-screen keyboard:
  - Press the **Edit** button in the **System** row to edit the *System* password. The *System* password equates to the *Password 1* setting in the Panel's Setup pages.
  - Press the **Edit** button in the **Settings** row to edit the *Settings* password. The *Settings* password equates to the *Password 2* setting in the Panel's Setup pages.
  - Note that the heading of the keyboard page indicates which Password is currently being edited (FIG. 11):

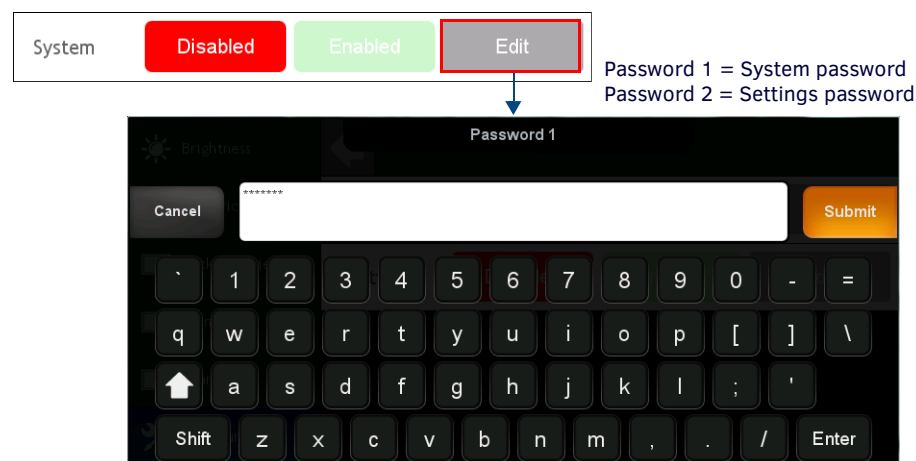
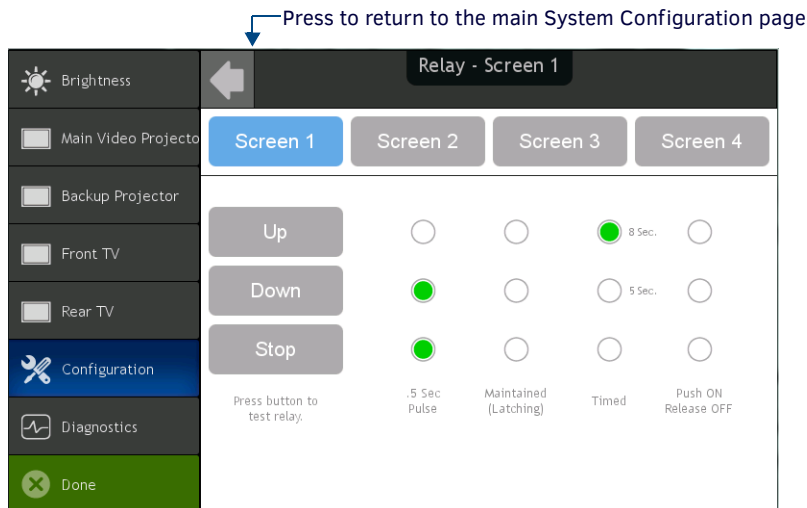


FIG. 11 System Password

5. Enter the desired *System* or *Settings* password, and press **Submit**.
6. To enable the *System* or *Settings* password, press the **Enable** button in the appropriate row.

### Screen Relays Page

Press **Screen Relays** in the System Configuration page to open the *Screen Relays Configuration Page* (FIG. 12):



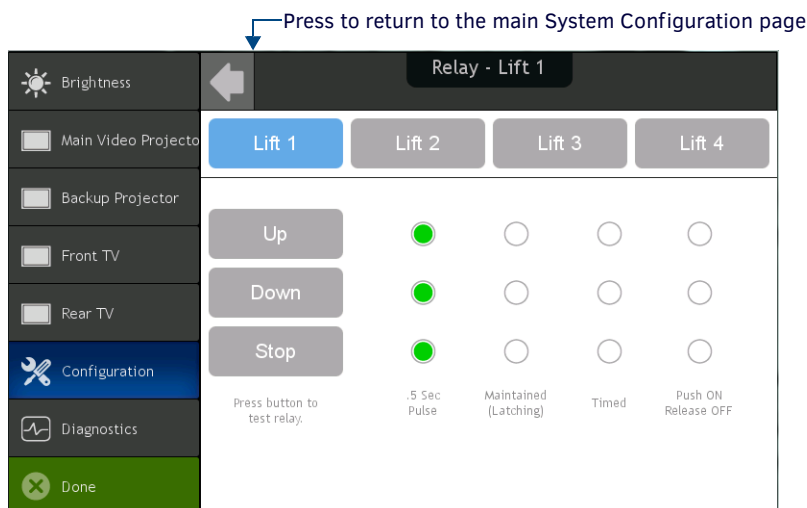
**FIG. 12** Screen Relays Configuration Page

Screen Relays Configuration Page - Options	
<b>Screen 1-4</b>	Each of the Screens specified in RPM are indicated (up to four), each with it's own set of <i>Up</i> , <i>Down</i> and <i>Stop</i> settings. Press any of these buttons to configure <i>Up</i> , <i>Down</i> and <i>Stop</i> settings for the selected Screen.
<b>Up, Down &amp; Stop</b>	Each Screen has Up, Down and Stop settings, indicated by the highlighted selector button for each setting. Press the Up, Down and Stop buttons to test the current setting.
<b>Up, Down &amp; Stop Settings</b>	
<b>.5 Sec Pulse</b>	Select this option to assign a half-second pulse to the Up, Down and/or Stop function (for the selected Screen).
<b>Maintained (Latching)</b>	Select this option to assign a latching command to the Up, Down and/or Stop function (for the selected Screen).
<b>Timed</b>	Select this option to assign a timed command to the Up, Down and/or Stop function (for the selected Screen). When this option is selected, it invokes an on-screen keypad, to specify a number of seconds for the timed Up, Down or Stop function. See the <i>Setting the Value for a Timed Relay Function</i> section on page 12 for details.

See the *Setting the Value for a Timed Relay Function* section on page 12 for details on setting timed relay functions.

### Lift Relays Page

Press **Lift Relays** in the main Configuration page to open the *Lift Relays Configuration Page* (FIG. 13):



**FIG. 13** Lift Relays Configuration Page

Lift Relays Configuration Page - Options	
<b>Lift 1-4</b>	Each of the Lifts specified in RPM are indicated (up to four), each with it's own set of <i>Up</i> , <i>Down</i> and <i>Stop</i> settings. Press any of these buttons to configure <i>Up</i> , <i>Down</i> and <i>Stop</i> settings for the selected Lift.
<b>Up, Down &amp; Stop</b>	Each Lift has Up, Down and Stop settings, indicated by the highlighted selector button for each setting. Press the Up, Down and Stop buttons to test the current setting.
<b>Up, Down &amp; Stop Settings</b>	
<b>.5 Sec Pulse</b>	Select this option to assign a half-second pulse to the Up, Down and/or Stop function (for the selected Lift).
<b>Maintained (Latching)</b>	Select this option to assign a latching command to the Up, Down and/or Stop function (for the selected Lift).
<b>Timed</b>	Select this option to assign a timed command to the Up, Down and/or Stop function (for the selected Lift). When this option is selected, it invokes an on-screen keypad, to specify a number of seconds for the timed Up, Down or Stop function. See the <i>Setting the Value for a Timed Relay Function</i> section on page 12 for details.
<b>Push ON Release OFF</b>	

See the *Setting the Value for a Timed Relay Function* section on page 12 for details on setting timed relay functions.

## Shade Relays Page

Press **Shade Relays** in the main Configuration page to open the *Shade Relays Configuration Page* (FIG. 14):

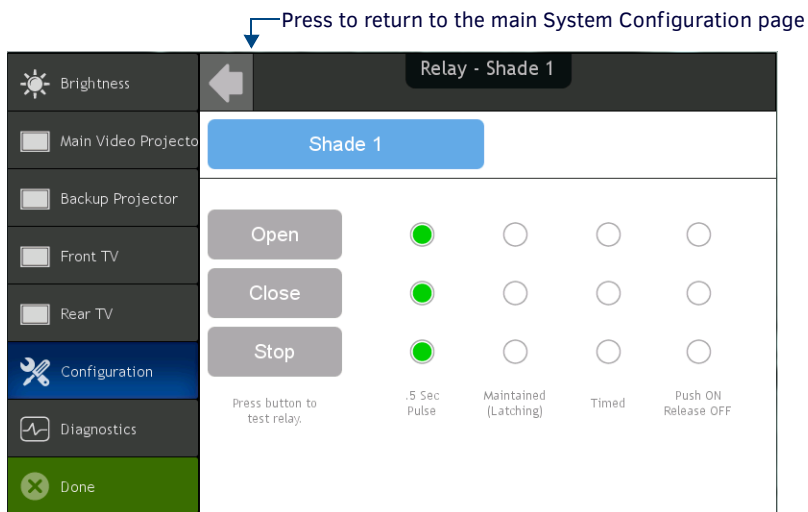


FIG. 14 Shade Relays Configuration Page

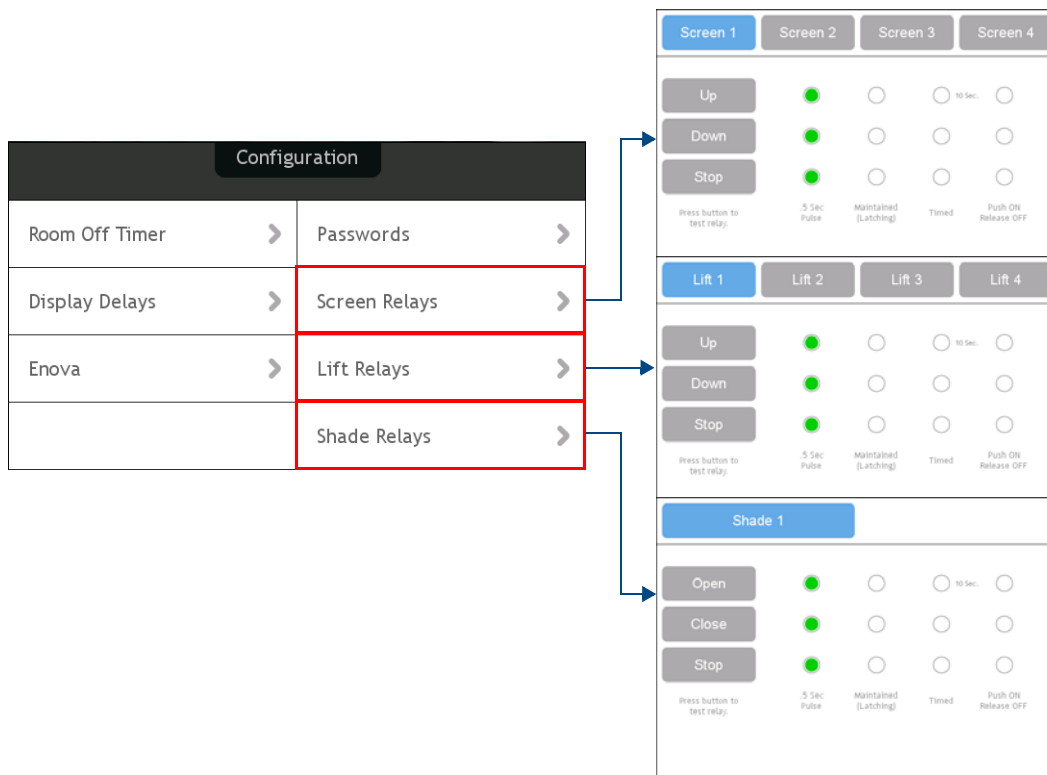
Shade Relays Configuration Page - Options	
<b>Shade 1-4</b>	Each of the Shades specified in RPM are presented in their own configuration page.
<b>Open, Close &amp; Stop</b>	Each Lift has Open, Close and Stop settings, indicated by the highlighted selector button for each setting. Press the Open, Close and Stop buttons to test the current setting.
<b>Open, Close &amp; Stop Settings</b>	
<b>.5 Sec Pulse</b>	Select this option to assign a half-second pulse to the Open, Close and/or Stop function (for the selected Shade).
<b>Maintained (Latching)</b>	Select this option to assign a latching command to the Open, Close and/or Stop function (for the selected Shade).
<b>Timed</b>	Select this option to assign a timed command to the Open, Close and/or Stop function (for the selected Shade). When this option is selected, it invokes an on-screen keypad, to specify a number of seconds for the timed Open, Close or Stop function. See the <i>Setting the Value for a Timed Relay Function</i> section on page 12 for details.
<b>Push ON Release OFF</b>	

See the *Setting the Value for a Timed Relay Function* section on page 12 for details on setting timed relay functions.

## Setting the Value for a Timed Relay Function

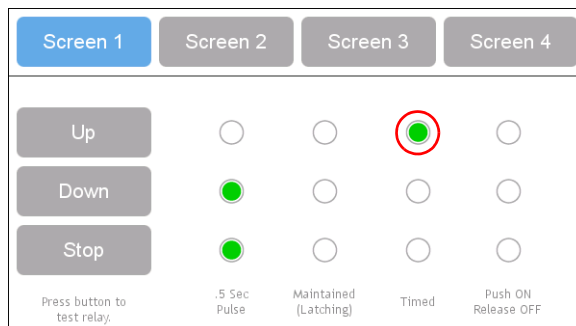
To set the value (number of seconds) for a timed Screen, Lift or Shade relay function:

1. Press the Time display in the header of the Home page to access the Touch Panel Configuration Pages (see FIG. 2 on page 5).
2. Press **Configuration** in the Navigation Menu to access the *System Configuration* page (see FIG. 6 on page 7).
3. Press on a Relay configuration option (*Screen Relays*, *Lift Relays* or *Shade Relays*):



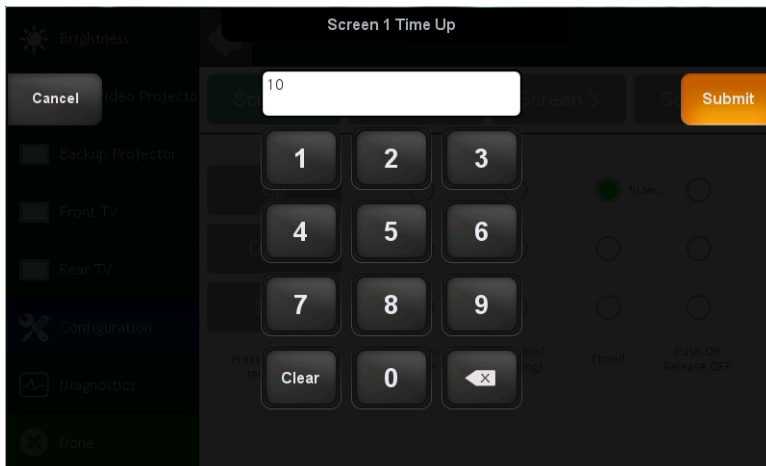
**FIG. 15** System Configuration Page - Relay configuration options

- Press **Screen Relays** to open the *Screen Relays Configuration Page* (initially focused on *Screen 1*).
  - Press **Lift Relays** to open the *Lift Relays Configuration Page* (initially focused on *Lift 1*).
  - Press **Shade Relays** to open the *Shade Relays Configuration Page* (initially opens to *Shade 1*).
4. Select the Screen, Lift or Shade for which you want to configure a timed relay function.
  5. Press the radio button in the **Timed** column for the desired lift relay function. The example in FIG. 16 shows that *Timed* has been selected for the *Up* lift function, for *Screen 1*:



**FIG. 16** Screen Relays Configuration Page ("Timed" selected for "Up" relay function on "Screen 1")

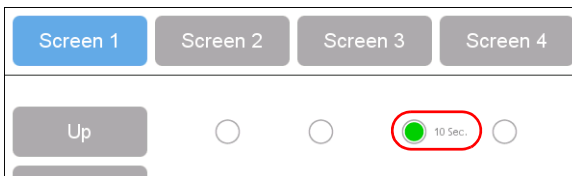
This action invokes an on-screen keypad, to allow entry of a time value (in seconds) for this timed relay function (FIG. 17):



**FIG. 17** On-Screen Keypad (Entering a Time value)

6. Enter the desired number of seconds for this timed relay function, and press **Submit**. This saves the change and closes the Keypad.

The specified value is indicated in the appropriate configuration page, next to the *Time* radio button (FIG. 18):

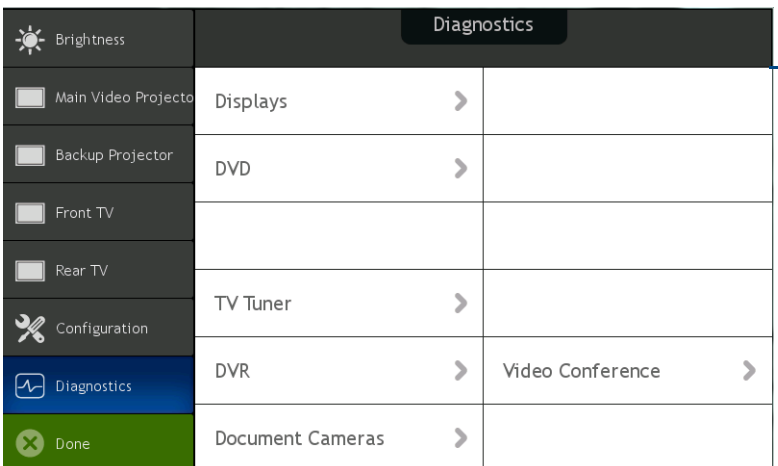


**FIG. 18** Screen Relays Configuration Page ("Timed" set to 10 seconds for "Up" relay function on "Screen 1")

**NOTE:** The "Time Up" value is *NOT* removed if the user later changes the configuration to use one of the other available options (.5 sec Pulse, Maintained, or Push ON Release OFF). The "Time Up" value is maintained until modified.

## Diagnostics

Press the **Diagnostics** button in the Navigation Menu to open the *System Diagnostics* page (FIG. 19):



Press to open the Diagnostics page for each Device listed

**FIG. 19** System Diagnostics Page

### Device Diagnostics Pages

Press any of the Devices in the main Diagnostics page to open the *Diagnostics Page* for the selected Device. The Diagnostics pages are identical for all devices, but the *Settings* option is only presented for IP devices.

An example diagnostics page is shown (for "Displays") in FIG. 20:

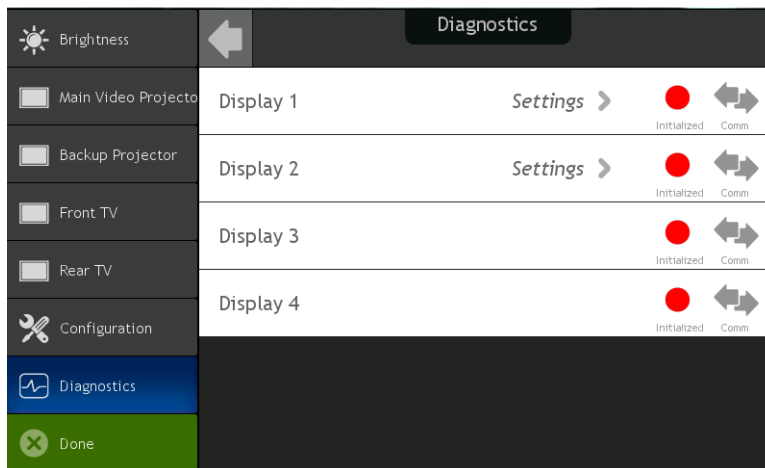


FIG. 20 Displays Diagnostics Page

Device Diagnostics Pages - Options	
<b>Display 1-4</b>	Each Display (1-4) is represented by it's own row.
<b>Initialized</b>	This icon indicates whether each device has been successfully initialized: <ul style="list-style-type: none"> <li>• <i>Green</i> = initialized</li> <li>• <i>Red</i> = not initialized</li> </ul>
<b>Comm</b>	This icon indicates whether each device is currently in communication with the AMX Controller: <ul style="list-style-type: none"> <li>• <i>Enabled</i> = communicating</li> <li>• <i>Disabled</i> = not communicating</li> </ul>

## Exiting the Panel Configuration Pages

To exit the Panel Configuration pages and return to the main panel page, press the **Done** button in the Navigation Menu (FIG. 21):



↑ Press to exit the panel configuration pages

FIG. 21 Brightness Configuration Page - Done button



© 2016 Harman. All rights reserved. Metreau, NetLinx, AMX, AV FOR AN IT WORLD, HARMAN, and their respective logos are registered trademarks of HARMAN. Oracle, Java and any other company or brand name referenced may be trademarks/registered trademarks of their respective companies. AMX does not assume responsibility for errors or omissions. AMX also reserves the right to alter specifications without prior notice at any time. The AMX Warranty and Return Policy and related documents can be viewed/downloaded at [www.amx.com](http://www.amx.com).  
**3000 RESEARCH DRIVE, RICHARDSON, TX 75082 AMX.com | 800.222.0193 | 469.624.8000 | +1.469.624.7400 | fax 469.624.7153**  
**AMX (UK) LTD, AMX by HARMAN - Unit C, Auster Road, Clifton Moor, York, YO30 4GD United Kingdom • +44 1904-343-100 • [www.amx.com/eu/](http://www.amx.com/eu/)**

Last Revised:  
1/29/2016