

Overview

The SVSI NMX-DEC-N2625-WP Wallplate Decoder is part of the N2600 Series and used in conjunction with N2600 Series Decoders for receiving HDMI over Ethernet. All Encoders and Decoders of the N2600 Series feature balanced audio, HDMI video connection, and Power-over-Ethernet (PoE+). The N2600 Series Decoders support output scaling and limited output downscaling options.

Wall plate models include white (WH) and black (BL) faceplate inserts.



FIG. 1 N2625-WP WALLPLATE DECODER

Installing the N2625-WP Wallplate Inserts:

Follow the steps below to mount your new N2625-WP Encoder faceplate inserts.

1. Select either the White or Black set of faceplates insert for the wallplate.
2. Locate the faceplate insert alignment tool.
3. Place the alignment tool around the faceplate where the insert will be applied. (Fig. 2)
4. Remove the adhesive from faceplate insert and place the insert within the alignment tool. (Fig. 2)
 - Ensure the LED and IO are aligned with the face insert correctly.
5. Press inserts firmly into place for several seconds before removing alignment tool.
6. Repeat the above process for the remaining faceplate inserts.

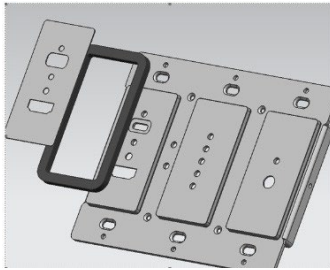


FIG. 2 N2625-WP WALLPLATE DECODER

Installing the N2625-WP Wallplate Decoder:

Follow the steps below to mount your new N2625-WP Decoder into an existing 3-gang electrical box. The instructions given assume the box is already installed with Ethernet access running to it.

1. Connect the PoE+-enabled Ethernet cable to the rear connector of the N2625-WP Decoder. This provides both network and power connection to the Encoder.
2. Place the N2625-WP Decoder into the box and secure it with six screws (included in shipment).
3. Check LEDs for normal display (see the LED table at right).
4. Attach the front cover plate (included or customer provided) to the unit to complete installation.

Attaching Signal and Control Cables

The following table explains how to attach cables to the front of the Decoder.

IMPORTANT: Decoders must be securely mounted and connected to the switch before attaching the remaining cables.

NOTE: Any switch handling the N2625-WP Decoder video stream must be configured to support jumbo frames. Disable the wireless adapter on your computer (it must be hard-wired to the switch).

Basic Cabling Guidelines

Connector	Description
HDMI OUT	Digital Video Connection For video decoding of a digital source, connect from the display to the Decoder's HDMI OUT connector using a video cable with an HDMI connector (or adapter).
IR OUT	IR Connection Insert an IR cable blaster from the IR device being controlled into the IR OUT jack (optional).
RS-232	Serial Control Connection Insert a RS-232 cable from a RS-232 enabled device into the RS-232 jack (optional).
AUDIO OUT - STEREO	Audio Decoding Insert an analog audio cable from the amplifier into the AUDIO OUT STEREO jack (optional) or use the embedded audio from the video source.

This table shows LED states on initial power up. If not normal, check connections.

Indicator LEDs	Normal power up	Indicates
Front-Left LEDs		
AUDIO*	Green	Configured to pass analog audio. (Coupled with digital or analog video path).
DIGITAL VIDEO*	Green	Configured to pass HDMI with embedded audio.
Front-Center LEDs		
POWER	Green	PoE power is applied.
STATUS	Green	Flashing when there is software activity.
STREAM	Green	On when the unit is receiving video from the network.
HDCP	Yellow	On when HDCP is active.
LINK/ACT	Green	Flashing when there is Ethernet activity.

* The LEDs for **DIGITAL VIDEO** and **AUDIO** each indicate the configured state of the connectors (not necessarily the presence of signals through the Encoder).

Additional Buttons

The front-center section of the unit is shown in FIG. 3. This section is covered by the cover plate once it has been installed.

ID button - Identifies the unit in N-able. Can also set Decoder back to factory defaults (*press and hold 30 seconds*).

RESET button - Resets Decoder's CPU.

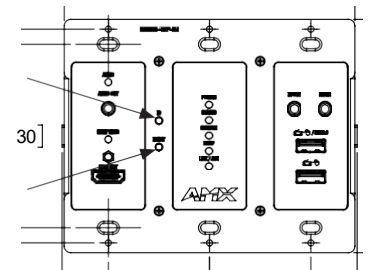


FIG. 3 BUTTONS LOCATED ON FRONT OF UNIT BEHIND FACE PLATE COVER

Establishing Connection

N2625-WP Decoders are shipped with **DHCP** as their default IP mode. The IP address is assigned automatically based on the network DHCP server. If no DHCP server is found, the unit will use **Auto IP** mode instead (with a default IP address of 169.254.xxx.xxx).

Before using your N2625-WP Decoder unit, it must be configured using the free N-able device management software. However, you will not be able to configure units until they are in the same subnet as the host computer. The sample steps below show how the required changes (to the host computer's IP settings) are made in a Windows environment.

Steps for IP address configuration:

1. From the **Control Panel > Network and Internet** dialog box, select **Network and Sharing Center**.
2. Select **Change adapter settings**.
3. Select the wired interface connected to your AV network.
4. Click the **Properties** button.
5. Scroll down in the list to the **Internet Protocol Version 4 (TCP/IPv4)** option. Highlight it and click the **Properties** button.
6. Enable the **Use the following IP address** option and enter the static IP address *provided to you by your network administrator*.

NOTE: If the computer does not need Internet access, you can simply enter a unique 169.254.xxx.xxx IP address with a 255.255.0.0 Subnet mask. Please contact your network administrator if you are unsure of how to configure the existing interface. If the computer has a statically assigned IP address, click on the Advanced button. Then click Add to enter a unique 169.254.xxx.xxx address with a subnet of 255.255.0.0.

Steps for auto discovering devices on the network:

1. Use the host computer to download and install the latest version of N-Able: PC version - <http://www.amx.com/products/N-ABLE-PC.asp>
2. Attach your N2625-WP Decoder unit(s) to the managed network switch.
3. Connect the host computer to the same managed network switch.
4. Open the N-Able application.

*Note: If all devices do not appear automatically, click the **Auto Discover** button on the **Unit Management** tab. This issues a broadcast command that will discover all units.*

Logging in Using N-Able Software

Once the host IP address is configured properly, you can view all discovered units using the N-Able software. Access the N2625-WP Decoder units from the following tabs:

- **Unit Management** tab - **N2600 Encoder/Decoder** is listed in the **Type** field.
- **Video Matrix** tab - N2625-WP Decoder units are found on the **N2600** sub-tab of this screen.

Double-click the unit's name (in one of the lists mentioned above) to view its **Settings** page. If prompted, enter **admin** and **password** for the default username and password. Once logged in, you can change the password (using the options on the unit's **Settings** page). From this page, you can access any of the main pages of the unit's GUI.

NOTE: If you would like for N-Able to support auto-login to your units, make sure N-Able's Device Auto-login settings match the unit's username and password (by selecting N-Able

> Settings from the N-Able tool bar).

NOTE: N2625-WP Decoder units can be configured to force HTTPS connections, so your web browser may give you a security warning. N-Able on Windows will ask you to download OpenSSL for Windows to connect HTTPS.

Basic USB 2.0 Setup

The N2625-WP Wallplate Decoder and N2615-WP/N2612D Encoders are KVM-capable. By default, USB connections are enabled and configured to follow video switching. Follow these steps for basic KVM setup.

1. On the N2615-WP Wallplate Encoder, connect the USB-C port to the computer to be controlled.
2. Connect the computer's video output to the Encoder's **HDMI IN** port.
3. On the N2622D or N2625-WP Decoder, connect the **HDMI OUT** to the display.
4. Connect a USB 2.0 device to the Decoder's USB Standard-A ports (they should be plugged into the top port).
5. Using N-Able, click the **Unit Management** tab.
6. Click the **Auto Discover** button to discover your new devices (if you have not already done so).
7. Once discovery is complete (and you see the new units listed in N-Able), click the Video Matrix tab.
8. On the matrix, click the common cell for the desired Encoder/Decoder streaming combination. See the screen shot below for an example.
9. Click the **Take** button to make the change to your matrix. The radio button turns green to indicate the connection was successful.

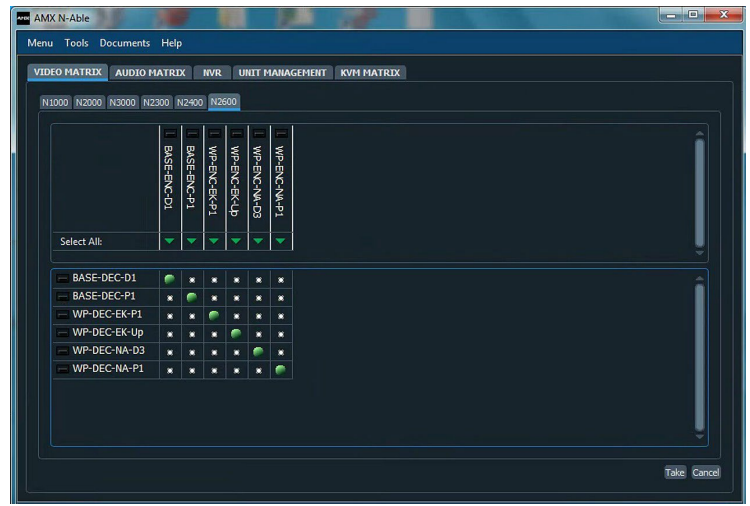


FIG.4 CREATING STREAMING COMBINATIONS

Video/USB Switching Options

Switching Option	Description
USB Follows Video	By default, units can be switched using N-Able without modifying the configuration. When you switch video streams (using the matrix as shown above) the USB functionality will follow the video.
Independent USB Switching	Use N-Able's USB Matrix tab to switch USB control (without affecting video).
Independent Video Switching	To switch video streams without affecting USB control, first select N-Able > Settings from N-Able's main menu. When the N-Able Settings dialog box is displayed, disable the USB follows Video switching for KVM units . Now you can use the Video Matrix to switch video streams only.

Specifications

Product Specifications	
Models Available:	NMX-DEC-N2625-WP-NA (US-Style) – AMX-N26D012 NMX-DEC-N2625-WP-EK (EU / UK Style) – AMX-N26D012-EK
Power Requirements:	Powered via a PoE switch or other equipment with a PoE source. Conforms to IEEE 802.3af Class 3 (802.3at Type 1).
Dimensions:	13.2 cm x 5.8 cm x 10.6 cm (LxWxH) – (NMX-ENC-N2612-WP-NA) 21.2 cm x 6.8 cm x 7.1 cm (LxWxH) – (NMX-ENC-N2612-WP-EK)
Weight:	401g
Certifications:	FCC, CE, and UL
Environmental:	Temperature: 32° to 104°F (0° to 40°C) Humidity: 10% to 90% RH (non-condensing)
Installation	Mounts into standard 3-gang US back box (NA models) Mounts into standard 3-gang EU back box (EK models) Standard Decor Style Trim Plates (NA Model) White or Black trim plates included (NA and EK Model)



© 2023 Harman. All rights reserved. SmartScale, NetLinX, Enova, AMX, AV FOR AN IT WORLD, and HARMAN, and their respective logos are registered trademarks of HARMAN. Oracle, Java and any other company or brand name referenced may be trademarks/registered trademarks of their respective companies.

AMX does not assume responsibility for errors or omissions. AMX also reserves the right to alter specifications without prior notice at any time. The AMX Warranty and Return Policy and related documents can be viewed/downloaded at www.amx.com.
3000 RESEARCH DRIVE, RICHARDSON, TX 75082 AMX.com | 800.222.0193 | 469.624.8000 | +1.469.624.7400 | fax 469.624.7153

1000375278 REV: A



Last Revised: 2023-07-25