

Overview

The Varia Fixed Tabletop stands are designed for 8" VARIA-80 & 10.1" VARIA-100 Touch Panels, and give them a sturdy & stylish fixed-angle tabletop solution that's reminiscent of AMX's Modero touch panel family.



FIG. 1 Varia Touch Panel on Fixed Tabletop Stand

Model Availability & Compatibility

FIXED TABLETOP STANDS	
VARIA-ACS-80F (AMX-UMT0801)	VARIA-80 Touch Panel (AMX-UTP0811)
VARIA-ACS-100F (AMX-UMT1001)	VARIA-100 Touch Panel (AMX-UTP1011) VARIA-100N Touch Panel (AMX-UTP1011N)

Other Models Available

ANGLE-SELECT TABLETOP STANDS	
VARIA-ACS-810A (AMX-UMT8111)	VARIA-80 Touch Panel (AMX-UTP0811) VARIA-100 Touch Panel (AMX-UTP1011) VARIA-100N Touch Panel (AMX-UTP1011N)
VARIA-ACS-150A (AMX-UMT1511)	VARIA-150 Touch Panel (AMX-UTP1511) VARIA-150N Touch Panel (AMX-UTP1511N)

Installation

Varia Fixed Tabletop Stands are easily installed with the supplied hardware and a Philips-head screwdriver.

1. Place the panel face-down on a soft cloth, and orient the panel so that the top of the touch panel is closest to you.

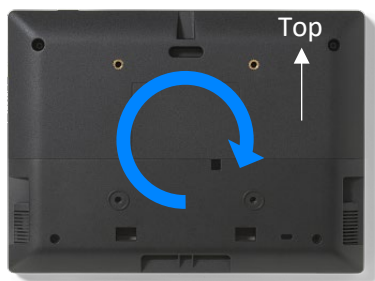


FIG. 2 Varia Touch Panel, rear

2. If they are installed, remove two screws from the lower back cover.

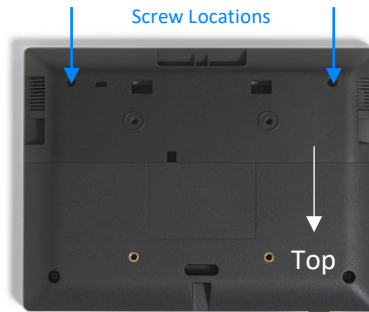


FIG. 3 Rear cover screws, if installed

3. Place your thumbs on the rectangular access holes, and push the lower cover away from you. The lower cover can then be placed aside; it is not used with the Fixed Tabletop Stands.

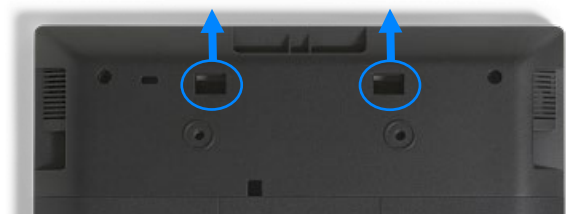


FIG. 4 Rear cover removal

4. Rotate the panel back around so the bottom is closest to you.
5. On the tabletop stand, remove the black plastic cover by sliding it away from the aluminum base. It is held on by magnets. Then unscrew the rubber pads from the base.
6. Install the aluminum base on the back of the touch panel.

Note: In most circumstances, the networking cable can be routed in after base installation. However, category cables with bulky strain relief and/or hoods over the RJ-45 connector may need to be installed before the aluminum base.



FIG. 5 Fixed Tabletop Stand, aluminum base, underneath

7. Attach the base with the four (4) supplied screws.

- Attach the left & right rubber pads to the bottom of the base, and then stand the unit upright to expose the screw holes. Attach with the five (5) supplied screws.

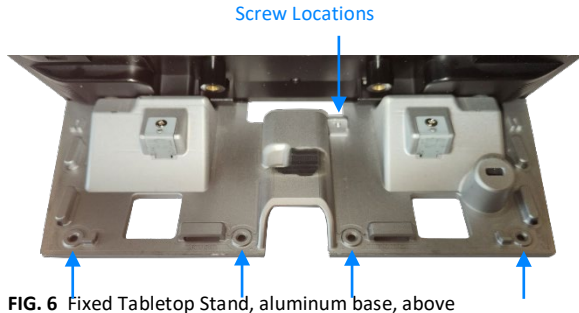


FIG. 6 Fixed Tabletop Stand, aluminum base, above

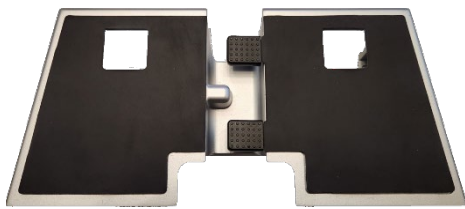


FIG. 7 Fixed Tabletop Stand, base assembled with rubber pads

Note: Certain screwdriver handles may interfere with the rear of the touch panel, especially the VARIA-80, when attaching screws that hold the rubber pads. Take care not to make contact.



FIG. 8 Varia Touch Panel, caution

- Route your networking cable through the opening and plug into the back of the panel. Then tuck your cable into the cable management tabs attached to the rubber pad.

- Align the black plastic cover with the tabs & slots on the aluminum base. Slide the cover on, and it will seat automatically with its built-in magnets.

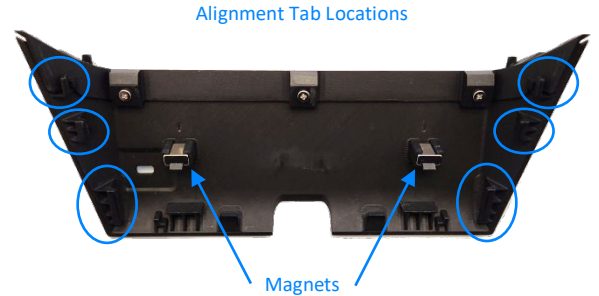


FIG. 9 Fixed Tabletop Stand, black plastic cover



FIG. 10 Varia Touch Panels on Fixed Tabletop Stand, various angles

Removing

To remove the panel, follow the installation directions in reverse.