



MANAGER

User Guide

Version 1.0

Last Updated: 2023-05-17



Contents

- System Requirements.....3
- Installation3
- Usage.....4
 - Device Discovery4
 - Device Configuration5
 - Firmware Update5
 - File Transfer.....6
 - Reboot, Locate & Factory Reset.....7

System Requirements

Minimum System Requirements

- Windows 10+ 64-bit
- 2 GHz processor
- 8 GB RAM
- 2-4 GB of disk space

Windows Administrative Requirements

- External access to port 4197 (UDP and TCP/IP)
- Allows access through any firewalls per IT requirements
- Set network accordingly (private or public)

Supported Products

- AMX Varia Panels

Installation

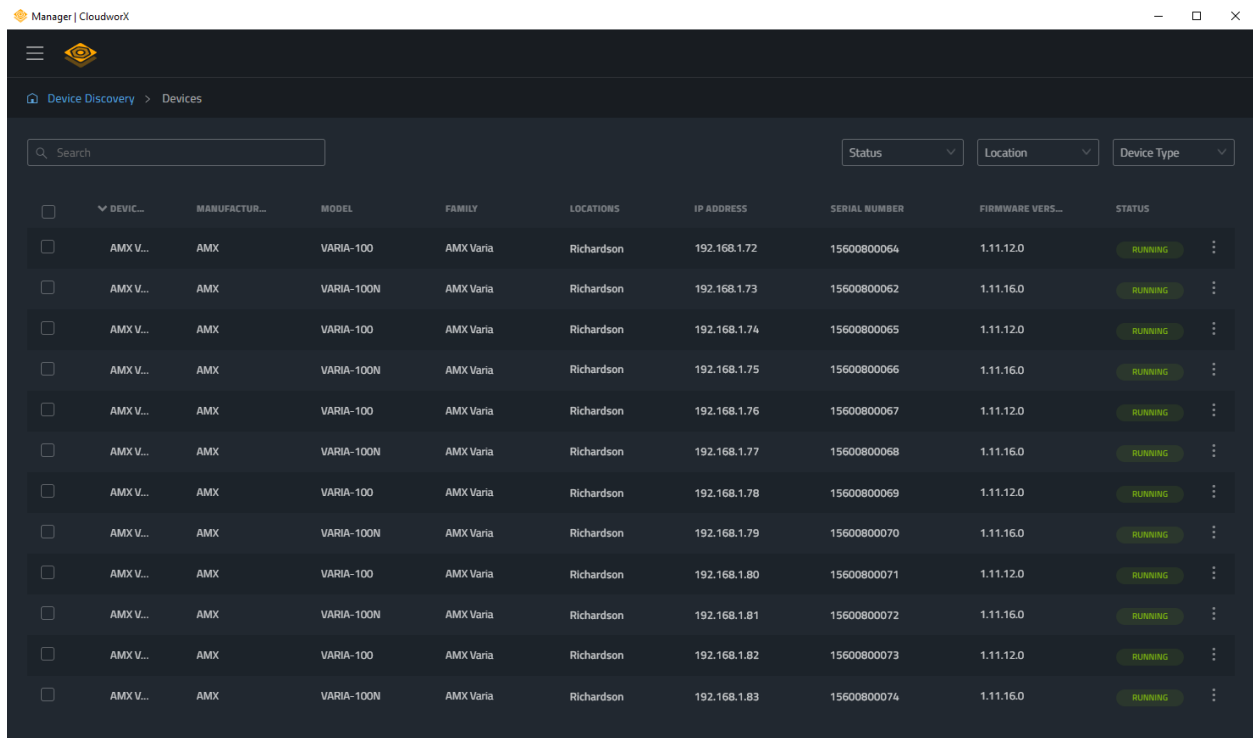
Navigate to amx.com and download the Manager installer. Launch the installer and proceed through the installation steps. Be sure your computer meets the minimum System Requirements listed above.

Usage

Device Discovery

When Manager launches, it will automatically discover any compatible Harman devices on your network. The device grid will be populated with all discovered devices. See Figure 1.

WARNING: As of v1.0.0.200, ensure you are not on a network with AMX Acendo Book devices. There is a known issue which can cause these devices to crash when discovered by Manager. This issue will be addressed in a near-term release.



	DEVIC...	MANUFACTUR...	MODEL	FAMILY	LOCATIONS	IP ADDRESS	SERIAL NUMBER	FIRMWARE VERS...	STATUS
<input type="checkbox"/>	AMX V...	AMX	VARIA-100	AMX Varia	Richardson	192.168.1.72	15600800064	1.11.12.0	RUNNING
<input type="checkbox"/>	AMX V...	AMX	VARIA-100N	AMX Varia	Richardson	192.168.1.73	15600800062	1.11.16.0	RUNNING
<input type="checkbox"/>	AMX V...	AMX	VARIA-100	AMX Varia	Richardson	192.168.1.74	15600800065	1.11.12.0	RUNNING
<input type="checkbox"/>	AMX V...	AMX	VARIA-100N	AMX Varia	Richardson	192.168.1.75	15600800066	1.11.16.0	RUNNING
<input type="checkbox"/>	AMX V...	AMX	VARIA-100	AMX Varia	Richardson	192.168.1.76	15600800067	1.11.12.0	RUNNING
<input type="checkbox"/>	AMX V...	AMX	VARIA-100N	AMX Varia	Richardson	192.168.1.77	15600800068	1.11.16.0	RUNNING
<input type="checkbox"/>	AMX V...	AMX	VARIA-100	AMX Varia	Richardson	192.168.1.78	15600800069	1.11.12.0	RUNNING
<input type="checkbox"/>	AMX V...	AMX	VARIA-100N	AMX Varia	Richardson	192.168.1.79	15600800070	1.11.16.0	RUNNING
<input type="checkbox"/>	AMX V...	AMX	VARIA-100	AMX Varia	Richardson	192.168.1.80	15600800071	1.11.12.0	RUNNING
<input type="checkbox"/>	AMX V...	AMX	VARIA-100N	AMX Varia	Richardson	192.168.1.81	15600800072	1.11.16.0	RUNNING
<input type="checkbox"/>	AMX V...	AMX	VARIA-100	AMX Varia	Richardson	192.168.1.82	15600800073	1.11.12.0	RUNNING
<input type="checkbox"/>	AMX V...	AMX	VARIA-100N	AMX Varia	Richardson	192.168.1.83	15600800074	1.11.16.0	RUNNING

Figure 1. Device discovery grid.

Device Configuration

From the device discovery grid, check the box of one or more devices to select the device. This will display the actions bar at the bottom of the application window. Select “Configure...” to configure the selected devices.

The configuration screen is data driven and dependent on the parameters provided by the device. See Figure 2.

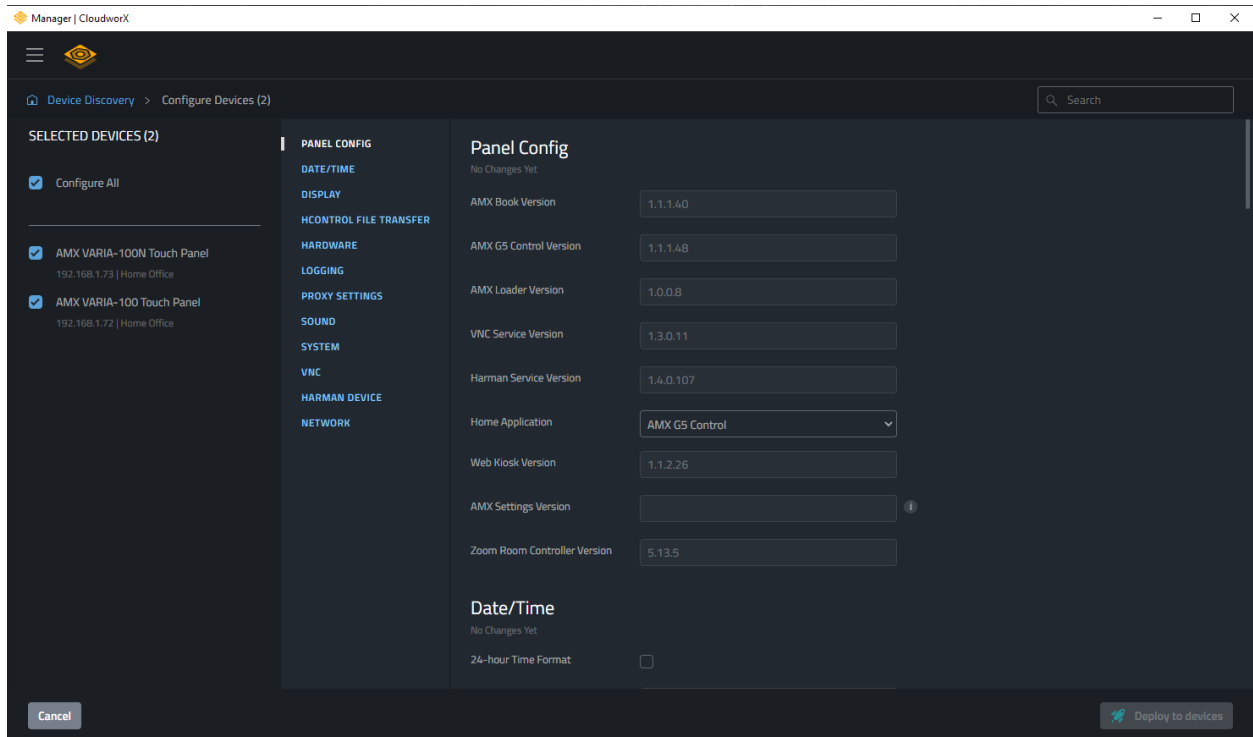


Figure 2. Device configuration screen.

Firmware Update

When a firmware update becomes available on our remote repository. An update firmware icon will appear in the Firmware Version column. Click this icon to update to the latest firmware.

File Transfer

Depending on the device type, certain file types can be transferred to the device via Manager. Simply click the checkbox for one or more devices and press the Transfer Files button on the actions bar. Drag and drop files to the dialogue window or browse the file system to select a compatible file to transfer. See Figure 3.

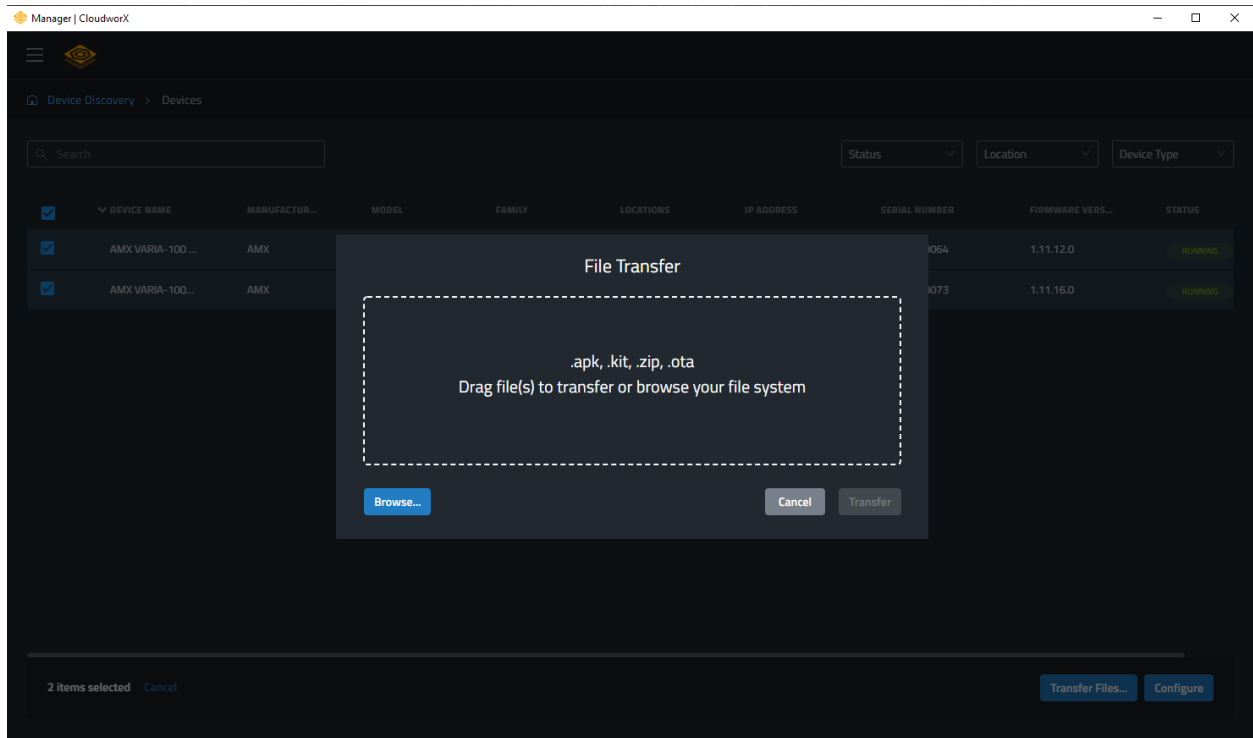


Figure 3. File Transfer dialogue.

Reboot, Locate & Factory Reset

To reboot, locate or factory reset a device, click the 3-dot menu of a device row to open its context menu. Select the desired action. See Figure 4.

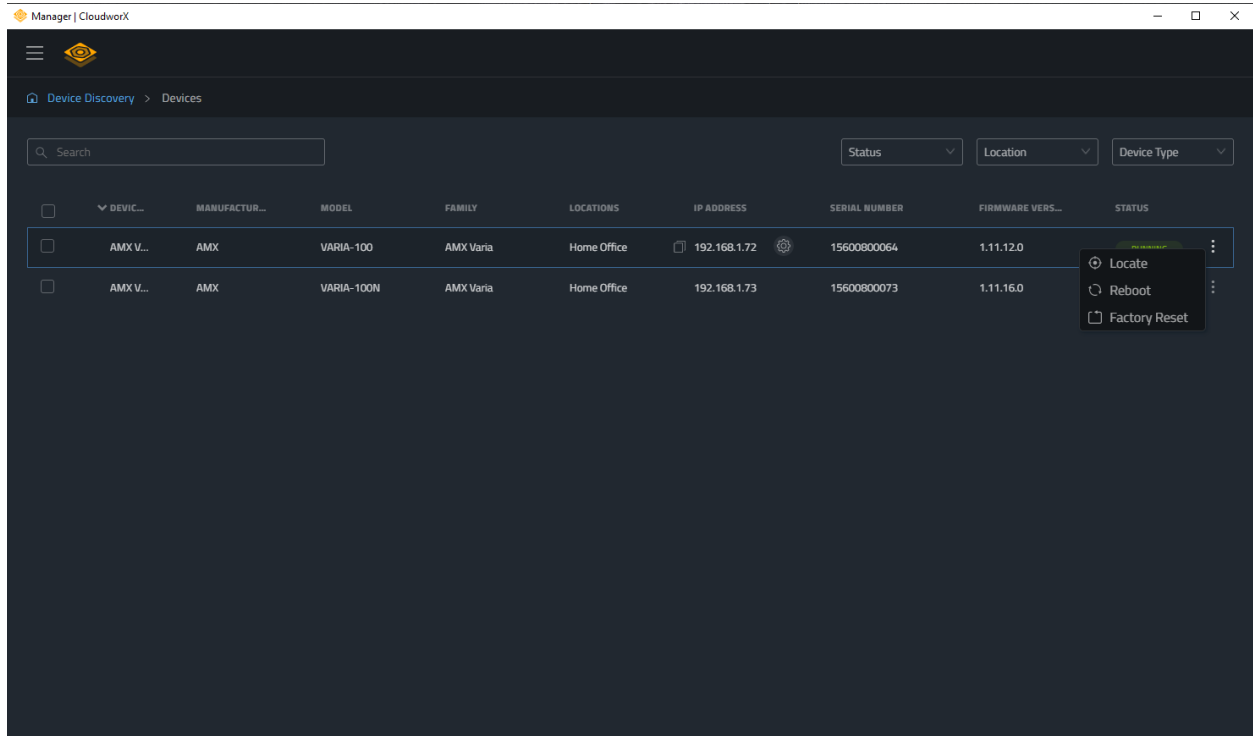


Figure 4. Device context menu for locate, reboot, and factory reset.